

SCOPE OF WORKS

GENERAL
THE WORKS SHALL INCLUDE BUT NOT BE LIMITED TO THE SUPPLY, DELIVERY, INSTALLATION, COMMISSIONING AND PROVISIONING OF ALL LABOUR AND MATERIALS REQUIRED TO COMPLETE THE INSTALLATION AND LEAVE IN FULL WORKING ORDER.

INSPECTION OF SITE DURING THE TENDER PROCESS TO ACCESS SITE DIMENSIONS, CONDITIONS, RESTRICTIONS AND EXISTING SERVICES/INSTALLATIONS, ANY VARIATION DUE TO LACK OF KNOWLEDGE WILL NOT BE ACCEPTED.

COORDINATE WITH OTHER TRADES AND COMPLIANCE WITH THE CONSTRUCTION PROGRAM.

STANDARDS
ALL WORKS ARE TO BE CARRIED OUT IN ACCORDANCE WITH AS3000, AS3008 AND THE NATIONAL CONSTRUCTION CODE.

AUTHORITIES
ALL WORKS PERFORMED SHALL COMPLY WITH THE RULES, REGULATIONS OF ANY FEDERAL, STATE OR LOCAL AUTHORITY HAVING JURISDICTION OVER THE WORKS, INCLUDING--
- QUEENSLAND ELECTRICAL COMMISSION (QEC)
- ENERGEX
- BUILDING CERTIFIER
- WORKPLACE HEALTH AND SAFETY

DEMOLITION
ALLOW TO IDENTIFY ANY LIVE CABLING PASSING THROUGH THE CONSTRUCTION ZONE.

DISCONNECT AND REMOVE/MAKE SAFE EXISTING LIGHT TOWERS. ALLOW TO REMOVE EXISTING SUPPLIES/ CONTROLS TO THESE POLES FED FROM DB-1.
NOTE - ENSURE NO DISRUPTION TO EXISTING LIGHT TOWER SUPPLIES DURING CONSTRUCTION.

PENETRATIONS
AFTER SERVICES INSTALLATION THE CONTRACTOR SHALL FIRE RATE ALL PENETRATIONS THROUGH FIRE RATED BUILDING ELEMENTS. FIRE RATING IS TO BE CARRIED OUT BY AN APPROVED INSTALLER USING APPROVED METHODS AND MATERIALS.

SWITCHBOARDS

ALLOW TO INSTALL NEW MAIN MCB'S AND LIGHTING CONTROLS WITHIN EXISTING DISTRIBUTION SWITCHBOARD.

ALL CIRCUITS ARE TO BE CLEARLY LABELED USING TRAFFOLYTE TYPE LABELS

CIRCUIT SCHEDULES ARE TO BE TYPED AND PROVIDED WITHIN A CLEAR SLEAVE WITHIN SWITCHBOARD DOOR. SCHEDULE TO ALSO INDICATE INCOMING MAINS SIZE.

REFER TO SINGLE LINE DIAGRAM FOR MORE INFORMATION

CABLING
ALL CABLING IS TO BE SUPPORTED AND PROTECTED IN ACCORDANCE WITH AS3000.

PROVIDE PIT AND CONDUIT SYSTEM AS NOTED.

ALLOW TO VACUUM EXCAVATE UNDER THE DRIP LINES OF ANY TREES.

LUMINAIRES
NO SUBSTITUTIONS ALLOWED, IF AN ALTERNATIVE IS PROPOSED IT MUST HAVE WRITTEN APPROVAL PRIOR TO ORDERING

ALL LUMINAIRES ARE TO BE PROVIDED IN ACCORDANCE WITH THE LIGHTING SCHEDULE AND INSTALLED IN ACCORDANCE WITH THE MANUFACTURES RECOMMENDATIONS.

ENSURE EXTERNAL LUMINAIRES ARE RATED TO A SUITABLE INTERNATIONAL PROTECTION (IP) RATING, TO AS1939.

LUMINAIRES ARE TO BE MOUNTED ON PROPRIETY SUPPORTS, BRACKETS, HANGERS ETC.

LIGHTING CONTROL SYSTEM
PROVIDE LIGHTING CONTROLS AS INDICATED ON THE DRAWINGS INCLUDING ANY REQUIRED DIMMERS, TIME CLOCKS AND/OR PE CELLS.

TESTING AND COMMISSIONING
BEFORE THE DATE OF PRACTICAL COMPLETION PROVIDE COPIES OF ALL TEST CERTIFICATES INCLUDING FORM 16, MAIN SWITCHBOARD, DISTRIBUTION BOARDS AND GENERAL SITE TESTING.

SITE TEST SHALL INCLUDE:
- THE ENTIRE INSTALLATION SHALL BE TESTED PRIOR TO BEING ENERGIZED. TESTING SHALL BE IN ACCORDANCE WITH AS3000 AND ENERGEX REQUIREMENTS. THESE INCLUDE ALL MANDATORY TESTS AS PER AS3000 AND ADDITIONAL TESTING IN ACCORDANCE WITH CLAUSE 6.3.4 OF AS3000.
- FAULT-LOOP IMPEDANCE TESTS TO ALL NON-RCD PROTECTED POWER SUBCIRCUITS.
- CERTIFICATION OF ALL RCD'S, TEST RESULTS TO BE INCLUDED WITHIN O&M MANUALS.

ANY FAULTS IDENTIFIED DURING TESTING TO BE RECTIFIED IMMEDIATELY AND RETESTED AT NO ADDITIONAL CHARGE TO THE CLIENT.

ALL SWITCHBOARDS ARE TO BE THERMOSCANNED USING AN INFRA RED SCANNING UNIT OR EQUIVALENT DURING THE DEFECTS LIABILITY PERIOD TO ENSURE NO FAULTY CONNECTIONS. ANY FAULTS IDENTIFIED ARE TO BE RECTIFIED IMMEDIATELY AND RETESTED AT NO ADDITIONAL CHARGE TO THE CLIENT. ALL TESTING DATA TO BE INCORPORATED IN THE O&M MANUALS. TESTING TO INCLUDE BUT NOT LIMITED TO THE FOLLOWING:
- FUNCTIONAL SWITCHBOARD TESTING, FULL FUNCTIONAL AND OPERATIONAL CHECKS ON ENERGISED CONTROL EQUIPMENT AND CIRCUITS INCLUDING ADJUSTMENTS FOR THE CORRECT OPERATION OF SAFETY DEVICES
- EARTH RESISTANCE TESTING TO AS3000

ENSURE THE LOAD IS BALANCED A PRACTICAL AT PRACTICAL COMPLETION.

CONFIRM ALL CIRCUIT PROTECTIVE DEVICES ARE SIZED AND ADJUSTED WHERE NECESSARY TO PROTECT THE INSTALLED CIRCUITS.

ALL FOR A SITE CLEAN OF INSTALLED SERVICES AND WORK AREAS INCLUDING, LUMINAIRES, SWITCHBOARDS, SWITCHBOARD CUPBOARDS, RISER CUPBOARDS. ENSURE ALL WASTE, WIRE CUTTINGS, CONDUITS ETC ARE REMOVED AND THE BUILDING LEFT CLEAN AND OPERATIONAL.

FOR ITEMS REQUIRED TO BE WITNESS TESTED BY THE ELECTRICAL ENGINEER ALLOW A MINIMUM OF 3 WORKING DAYS NOTICE.

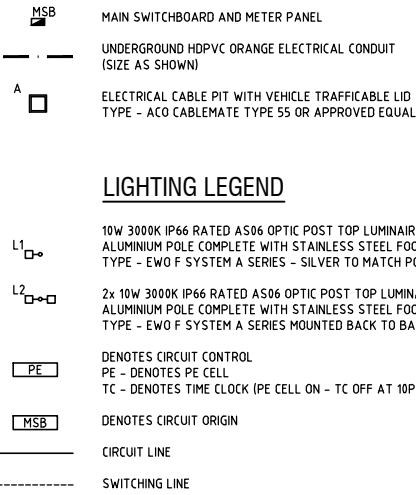
MAINTENANCE AND DEFECTS LIABILITY
PRIOR TO PRACTICAL COMPLETION SUPPLY AS CONSTRUCTED DRAWINGS IN AUTOCAD AND PDF FORMAT TO THE SAME STANDARD AS THE DESIGN DOCUMENTS.

PROVIDE OPERATION AND MAINTENANCE MANUALS FOR WORKS INSTALLED INCLUDING:
- SAFE WORK PROCEDURES FOR SWITCHING AND ISOLATING THE SUPPLY AND DISTRIBUTION SYSTEM.
- INFORMATION/DOCUMENTATION FOR THE LONG TERM OPERATION AND MAINTENANCE OF THE INSTALLATION
- RECOMMENDED MAINTENANCE PROCEDURES AND PERIODS OF MAINTENANCE
- WHERE NECESSARY PROVIDE PROCEDURES FOR DISMANTLING AND RE-ASSEMBLING EQUIPMENT
- A LIST OF ANY SPARE PARTS PROVIDED
- A FULL SET OF AS CONSTRUCTED DRAWINGS
- A COPY OF MAIN SWITCHBOARD DETAILS INCLUDING SWITCHBOARD SCHEDULES AND MANUFACTURER SHOP DRAWINGS
- FULL LIST OF WARRANTIES AND/OR GUARANTEES
- COPY OF CONTRACTOR CERTIFICATE (FORM 16)

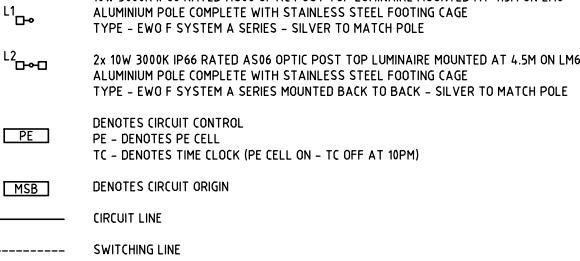
POINT VERNON RAMP/ STAIR LIGHTING

ELECTRICAL SERVICES

POWER LEGEND

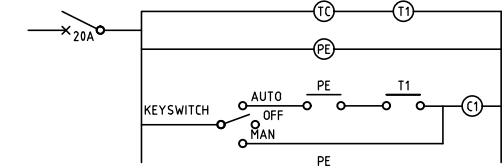


LIGHTING LEGEND



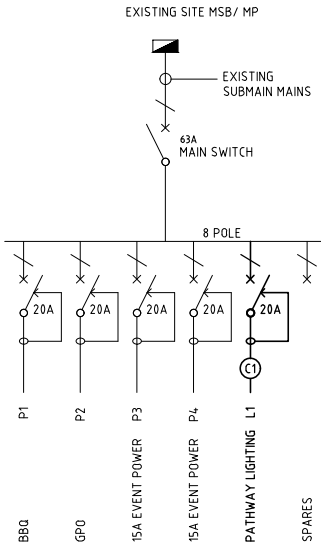
NOTES

1. CONTACTORS TO BE SIZED TO SUIT CIRCUIT LOADS.
REFER TO LAYOUT DRAWING FOR FIXTURE QUANTITIES.
2. ROTARY SWITCH TO BE LOCATED WITHIN SWITCHBOARD.



LIGHTING CONTRL SCHEMATIC

N.T.S

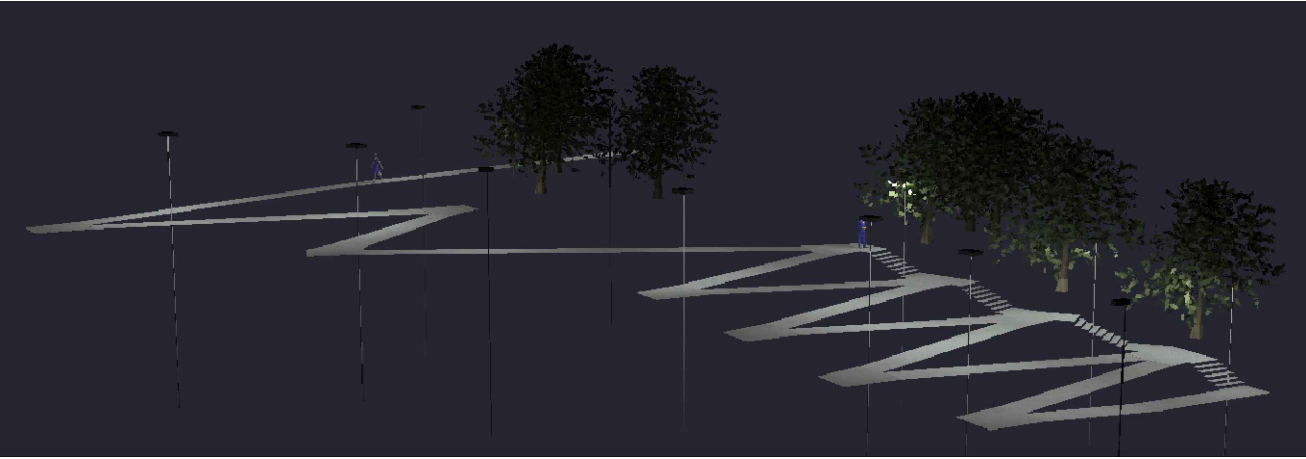


EXISTIN PARK DB - SINGLE LINE DIAGRAM

N.T.S

DRAWING REGISTER

E01	ELECTRICAL SERVICES	LEGEND, LOCATION PLAN AND SCOPE OF WORKS
E02	ELECTRICAL SERVICES	SITE PLAN PATHWAY LIGHTING LAYOUT
E03	ELECTRICAL SERVICES	PATHWAY LIGHTING CALCULATIONS



SITE LOCATION PLAN

N.T.S

AMENDMENTS

ISSUE	DATE	AMENDMENT	REV'D	APP'D
P1	05.10.21	PRELIMINARY ISSUE	-	M.B.
P2	08.10.21	COORDINATION ISSUE	-	M.B.

MBE SERVICES GROUP
PTY LTD
ACN No. - 613 727 183
Mail - PO Box 573 North Lakes QLD 4509
Email - michael@mbeservices.com.au

COPYRIGHT 2019 MBE SERVICES GROUP PTY LTD ACN 613 727 183. ALL RIGHTS RESERVED. THIS DRAWING MAY NOT BE REPRODUCED OR TRANSMITTED IN ANY FORM OR BY ANY MEANS IN PART OR IN WHOLE WITHOUT THE WRITTEN PERMISSION OF MBE SERVICES GROUP PTY LTD. DRAWINGS ARE SCHEMATIC AND SHALL BE READ IN CONJUNCTION WITH ALL CONTRACT DOCUMENTATION. SHOULD ANY AMBIGUITY, ERROR, OMISSION, DISCREPANCY, INCONSISTENCY OR OTHER FAULT APPEAR TO EXIST IN THE DOCUMENTS, IMMEDIATELY NOTIFY THE CONTRACT ADMINISTRATOR IN WRITING.

CLIENT
FRASER COAST REGIONAL COUNCIL
77 TAVISTOCK STREET
TORQUEY QLD 4655

ARCHITECT

PROJECT
POINT VERNON RAMP/ STAIR LIGHTING

DRAWING
ELECTRICAL SERVICES
LEGEND, SITE LOCATION AND
SCOPE OF WORKS

PROJECT STATUS				
COORDINATION				
SCALE	DRAFTED	DESIGNED	REVIEWED	APPROVED
1:100 AT A1	M.B.	M.B.	M.B.	M.B.
PROJECT No	DRAWING NUMBER		REVISION	
MB366	E01		P2	