

## Appendix D - Mapping

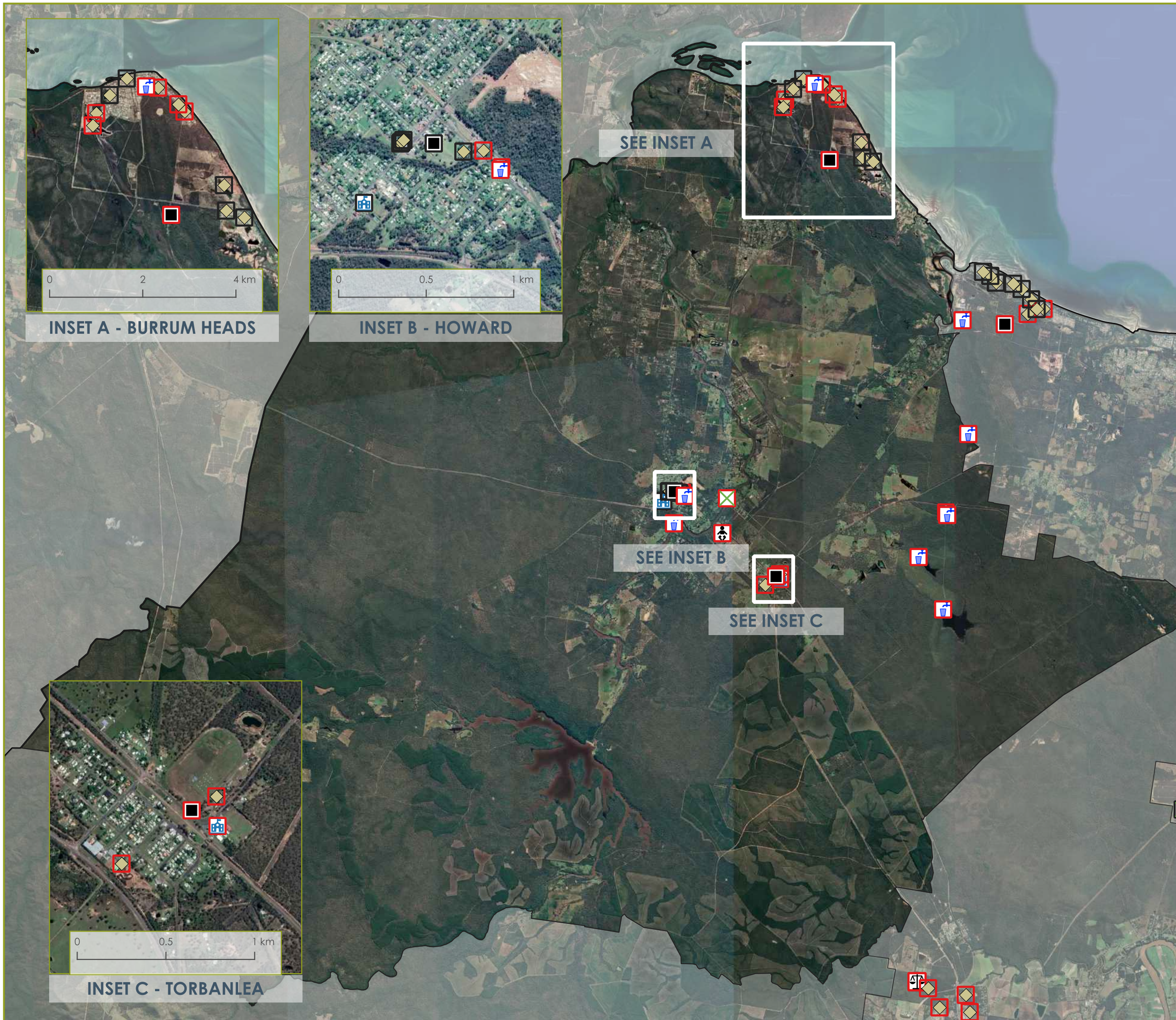


EXPOSURE OF VULNERABLE FACILITIES AND ESSENTIAL COMMUNITY INFRASTRUCTURE - ZONE 1 - BURRUM CHERWELL

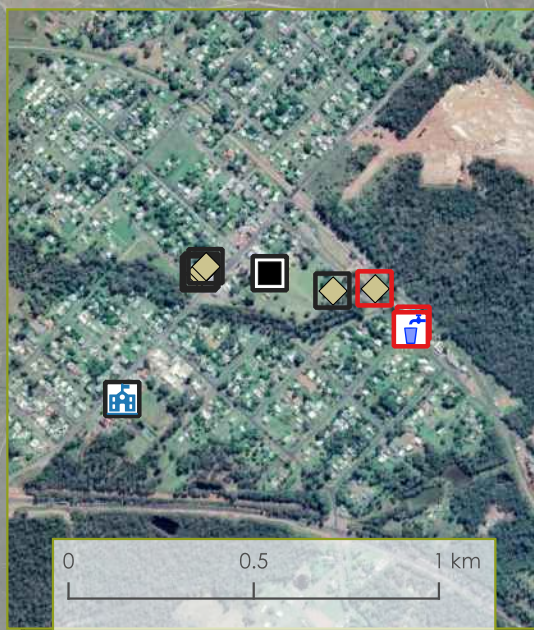
FRASER COAST BUSHFIRE RISK ASSESSMENT

LEGEND

- |                               |                             |
|-------------------------------|-----------------------------|
| Potential Bushfire Exposure   | Vulnerable Facilities       |
| ◻ Not exposed                 | 👴 Aged Care                 |
| ◻ Exposed                     | 👶 Childcare Care            |
|                               | ⚖️ Correctional Facility    |
| ⬡ Critical Infrastructure     | 🏥 Hospitals                 |
| ⬡ Sewerage Pumping Station    | 🎓 Higher Education Facility |
| 🚰 Water Pumping Station       | 🏫 Schools                   |
| 🗑️ Wastewater Treatment Plant |                             |
| 💧 Water Treatment Plant       |                             |
| ⚡ Zone Substations            |                             |



INSET A - BURRUM HEADS



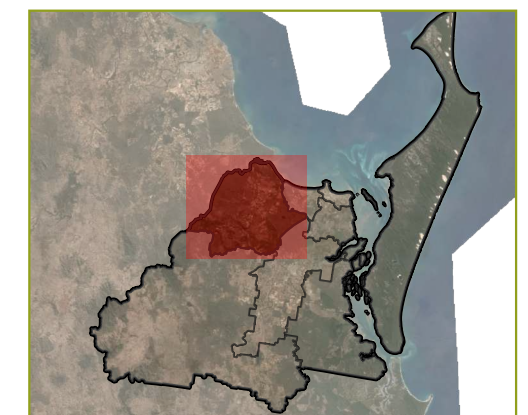
INSET B - HOWARD



INSET C - TORBANLEA



INSET D - TORBANLEA



Project No: 22-024 Map No: 1 of 8

Coordinate System: GDA 2020 MGA Zone 56  
 Printed at: A3  
 Creation Date: 24/10/2022  
 Credits: Earthstar Geographics SIO, © 2021 TomTom, © OpenStreetMap





EXPOSURE OF VULNERABLE FACILITIES AND ESSENTIAL COMMUNITY INFRASTRUCTURE - ZONE 2 - TOOGOOM DUNDOWRAN  
FRASER COAST BUSHFIRE RISK ASSESSMENT

LEGEND

- |                             |                           |
|-----------------------------|---------------------------|
| Potential Bushfire Exposure | Vulnerable Facilities     |
| Not exposed                 | Aged Care                 |
| Exposed                     | Childcare Centre          |
| Critical Infrastructure     | Correctional Facility     |
| Sewerage Pumping Station    | Hospitals                 |
| Water Pumping Station       | Higher Education Facility |
| Wastewater Treatment Plant  | Schools                   |
| Water Treatment Plant       |                           |
| Zone Substations            |                           |



SEE INSET A

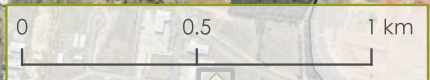


Project No: 22-024 Map No: 2 of 8

Coordinate System: GDA 2020 MGA Zone 56  
Printed at: A3  
Creation Date: 24/10/2022  
Credits: Earthstar Geographics SIO, © 2021 TomTom, © OpenStreetMap



INSET A - DUNDOWRAN

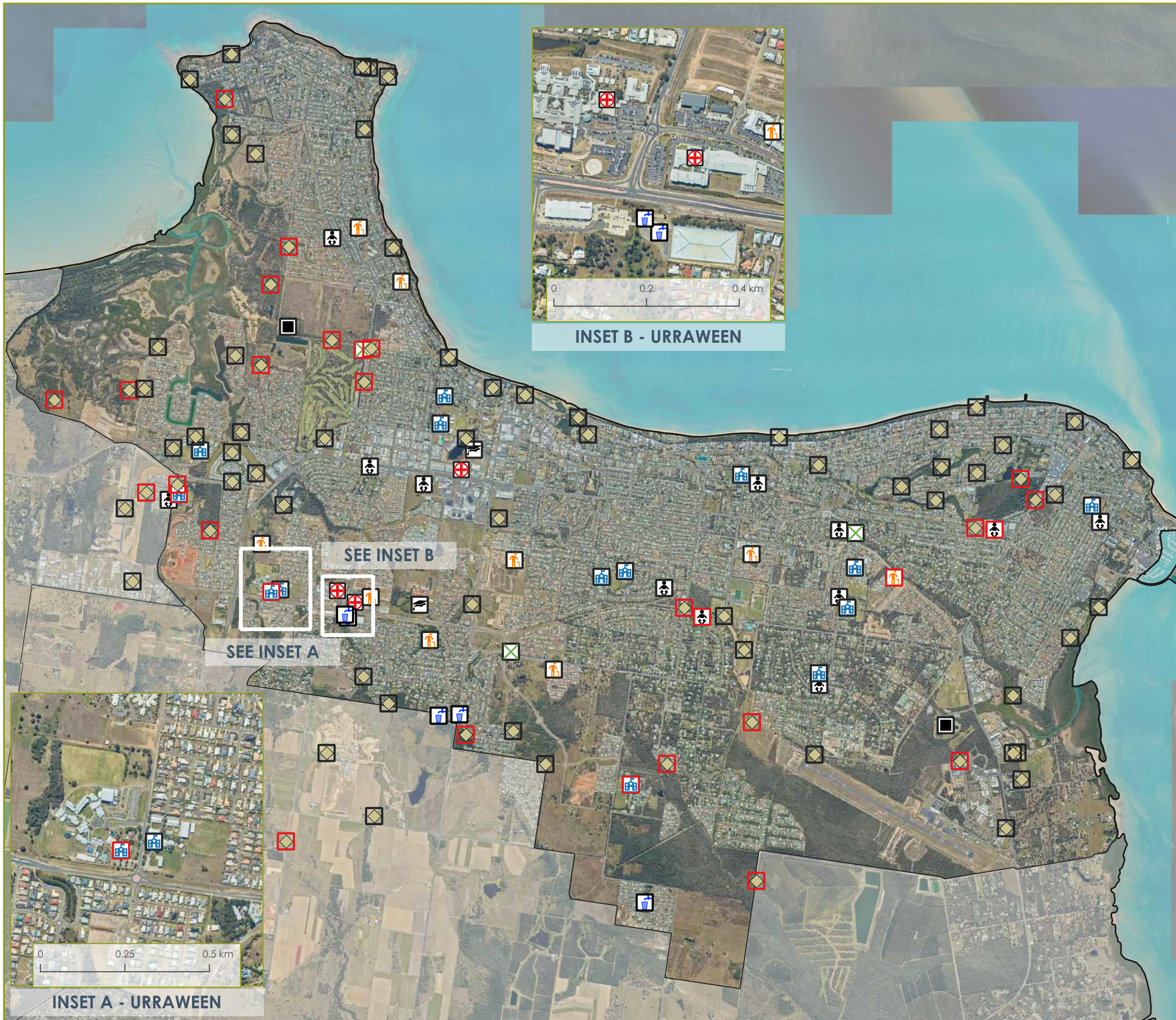




EXPOSURE OF VULNERABLE FACILITIES AND ESSENTIAL COMMUNITY INFRASTRUCTURE - ZONE 3 - ELI WATERS URANGAN  
FRASER COAST BUSHFIRE RISK ASSESSMENT

LEGEND

- |                             |                           |
|-----------------------------|---------------------------|
| Potential Bushfire Exposure | Vulnerable Facilities     |
| Not exposed                 | Aged Care                 |
| Exposed                     | Childcare Centre          |
| Critical Infrastructure     | Correctional Facility     |
| Sewerage Pumping Station    | Hospitals                 |
| Water Pumping Station       | Higher Education Facility |
| Wastewater Treatment Plant  | Schools                   |
| Water Treatment Plant       |                           |
| Zone Substations            |                           |



INSET B - URRAWEEN



INSET A - URRAWEEN



Project No: 22-024 Map No: 3 of 8

Coordinate System: GDA 2020 MGA Zone 56  
Printed at: A3  
Creation Date: 24/10/2022  
Credits: Earthstar Geographics SIO, © 2021 TomTom, © OpenStreetMap

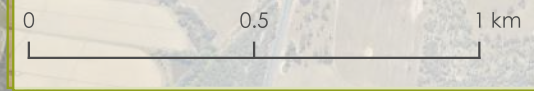
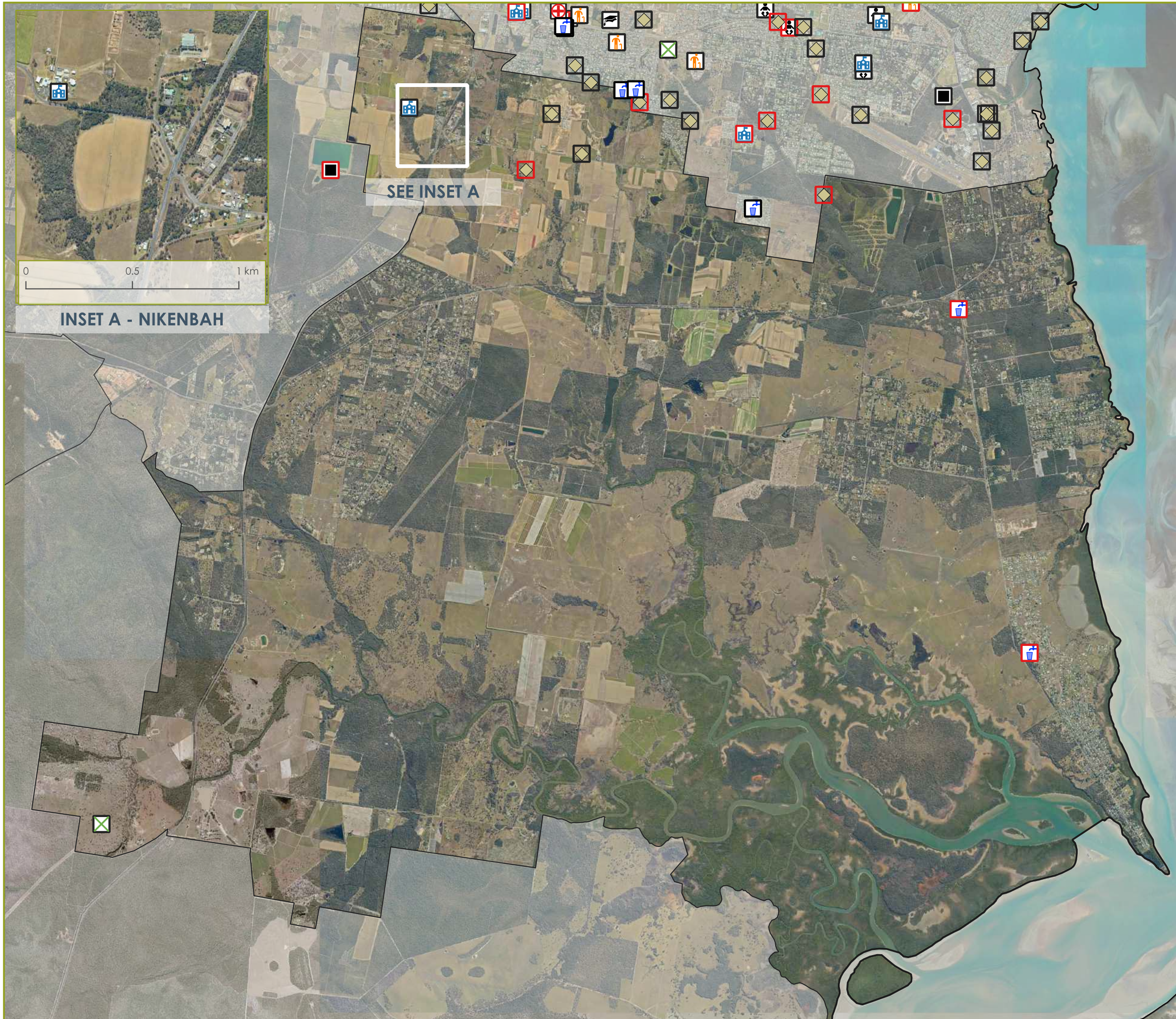




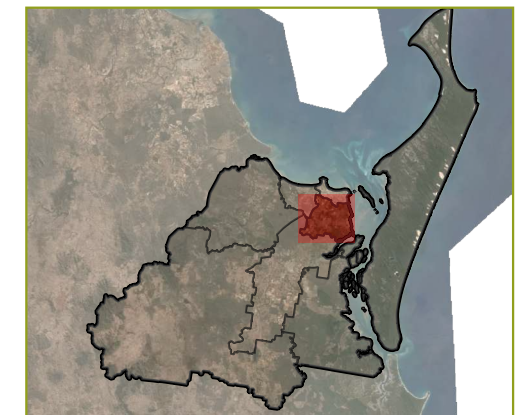
EXPOSURE OF VULNERABLE FACILITIES AND ESSENTIAL COMMUNITY INFRASTRUCTURE - ZONE 4 - NIKENBAH RIVER HEADS  
FRASER COAST BUSHFIRE RISK ASSESSMENT

LEGEND

- |                             |                           |
|-----------------------------|---------------------------|
| Potential Bushfire Exposure | Vulnerable Facilities     |
| Not exposed                 | Aged Care                 |
| Exposed                     | Childcare Centre          |
| Critical Infrastructure     | Correctional Facility     |
| Sewerage Pumping Station    | Hospitals                 |
| Water Pumping Station       | Higher Education Facility |
| Wastewater Treatment Plant  | Schools                   |
| Water Treatment Plant       |                           |
| Zone Substations            |                           |



INSET A - NIKENBAH



Project No: 22-024 Map No: 4 of 8

Coordinate System: GDA 2020 MGA Zone 56  
 Printed at: A3  
 Creation Date: 24/10/2022  
 Credits: Earthstar Geographics SIO, © 2021 TomTom, © OpenStreetMap

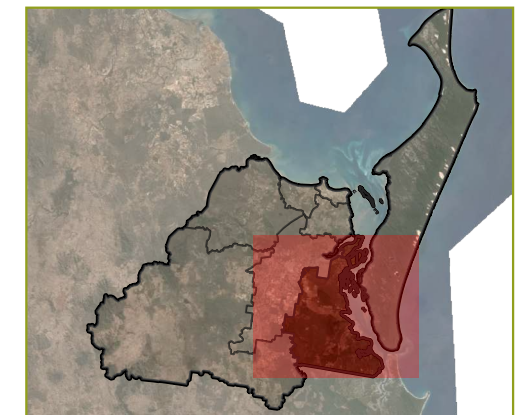
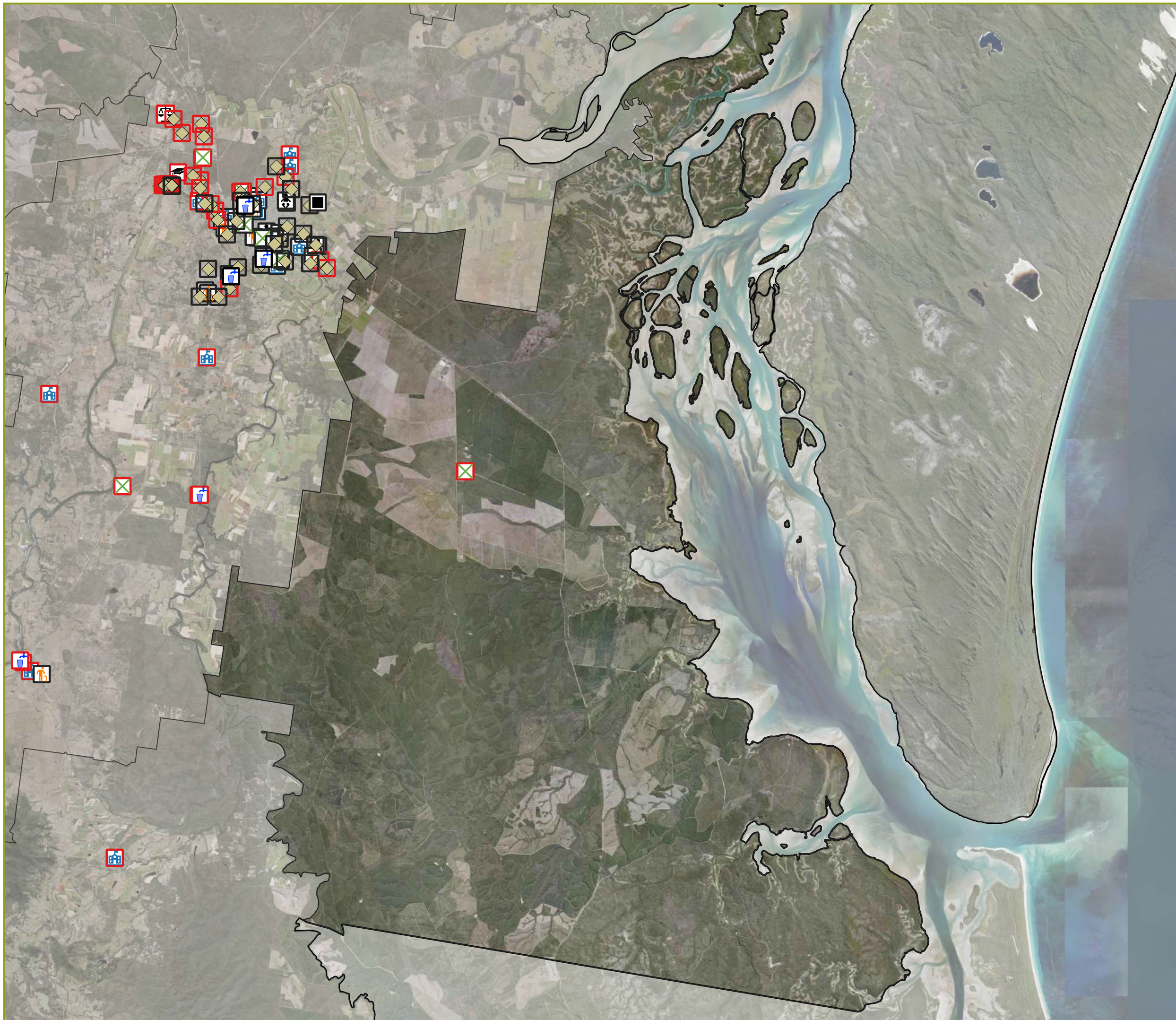




EXPOSURE OF VULNERABLE FACILITIES AND ESSENTIAL COMMUNITY INFRASTRUCTURE - ZONE 5 - GREAT SANDY STRAIT  
FRASER COAST BUSHFIRE RISK ASSESSMENT

LEGEND

- |                             |                           |
|-----------------------------|---------------------------|
| Potential Bushfire Exposure | Vulnerable Facilities     |
| Not exposed                 | Aged Care                 |
| Exposed                     | Childcare Centre          |
| Critical Infrastructure     | Correctional Facility     |
| Sewerage Pumping Station    | Hospitals                 |
| Water Pumping Station       | Higher Education Facility |
| Wastewater Treatment Plant  | Schools                   |
| Water Treatment Plant       |                           |
| Zone Substations            |                           |



Project No: 22-024 Map No: 5 of 8

Coordinate System: GDA 2020 MGA Zone 56  
 Printed at: A3  
 Creation Date: 24/10/2022  
 Credits: Earthstar Geographics SIO, © 2021 TomTom, © OpenStreetMap

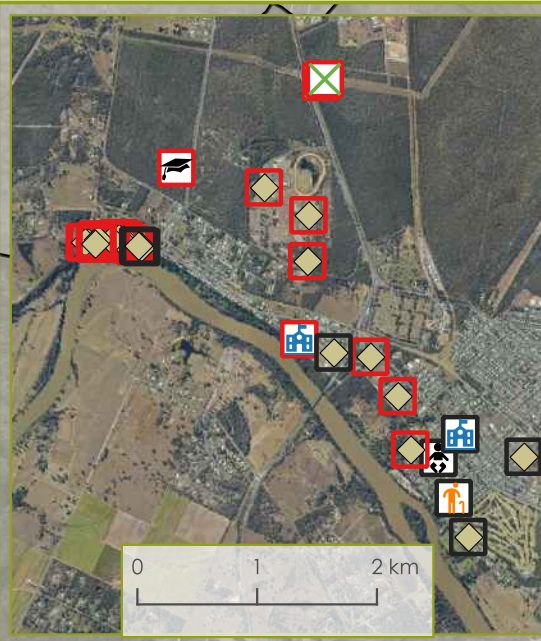




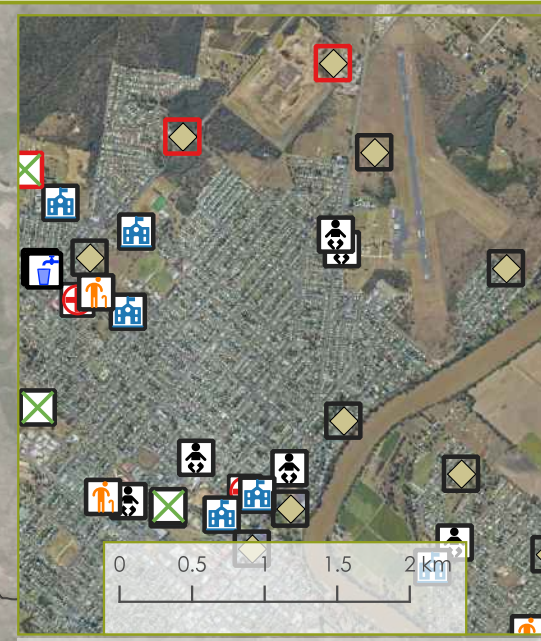
EXPOSURE OF VULNERABLE FACILITIES AND ESSENTIAL COMMUNITY INFRASTRUCTURE - ZONE 6 - MARY RIVER  
FRASER COAST BUSHFIRE RISK ASSESSMENT

LEGEND

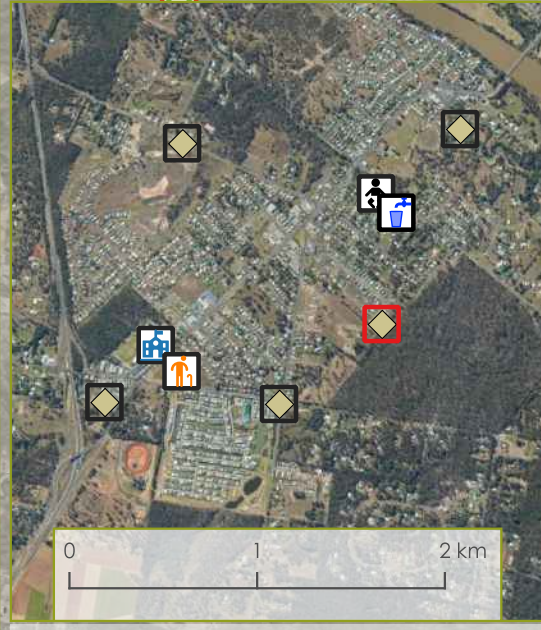
- |                             |                           |
|-----------------------------|---------------------------|
| Potential Bushfire Exposure | Vulnerable Facilities     |
| Not exposed                 | Aged Care                 |
| Exposed                     | Childcare Centre          |
| Critical Infrastructure     | Correctional Facility     |
| Sewerage Pumping Station    | Hospitals                 |
| Water Pumping Station       | Higher Education Facility |
| Wastewater Treatment Plant  | Schools                   |
| Water Treatment Plant       |                           |
| Zone Substations            |                           |



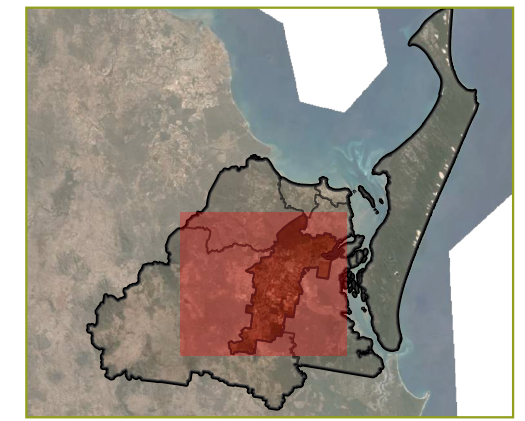
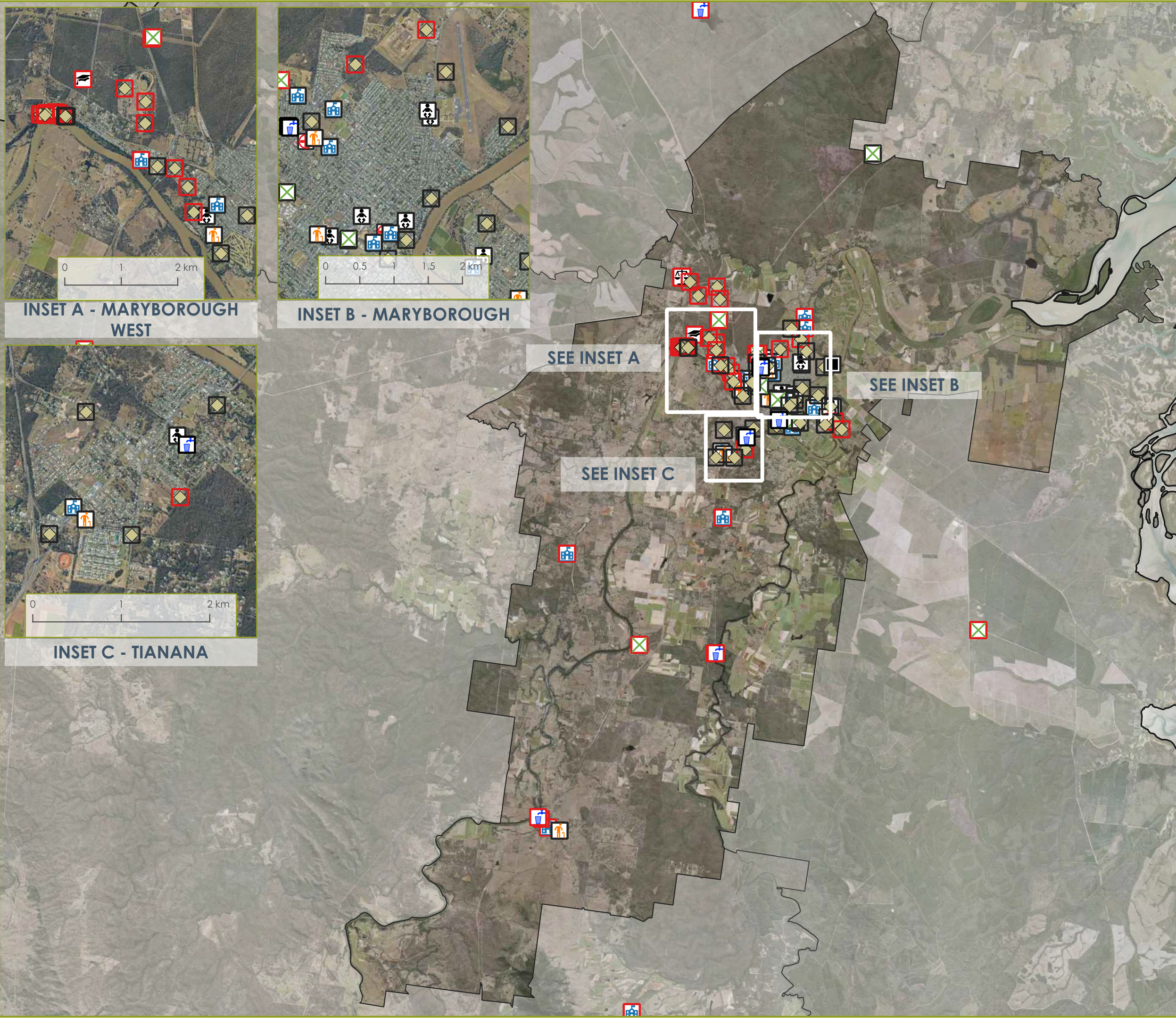
INSET A - MARYBOROUGH WEST



INSET B - MARYBOROUGH



INSET C - TIANANA



Project No: 22-024 Map No: 6 of 8

Coordinate System: GDA 2020 MGA Zone 56  
Printed at: A3  
Creation Date: 24/10/2022  
Credits: Earthstar Geographics SIO, © 2021 TomTom, © OpenStreetMap



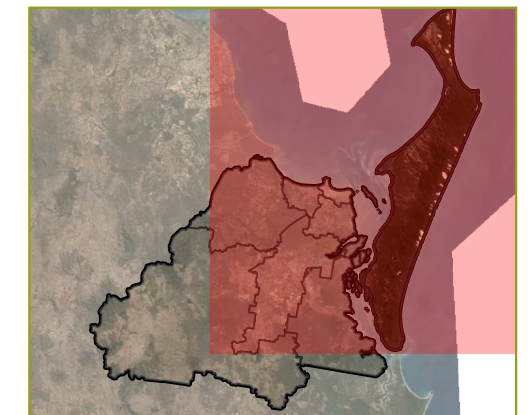
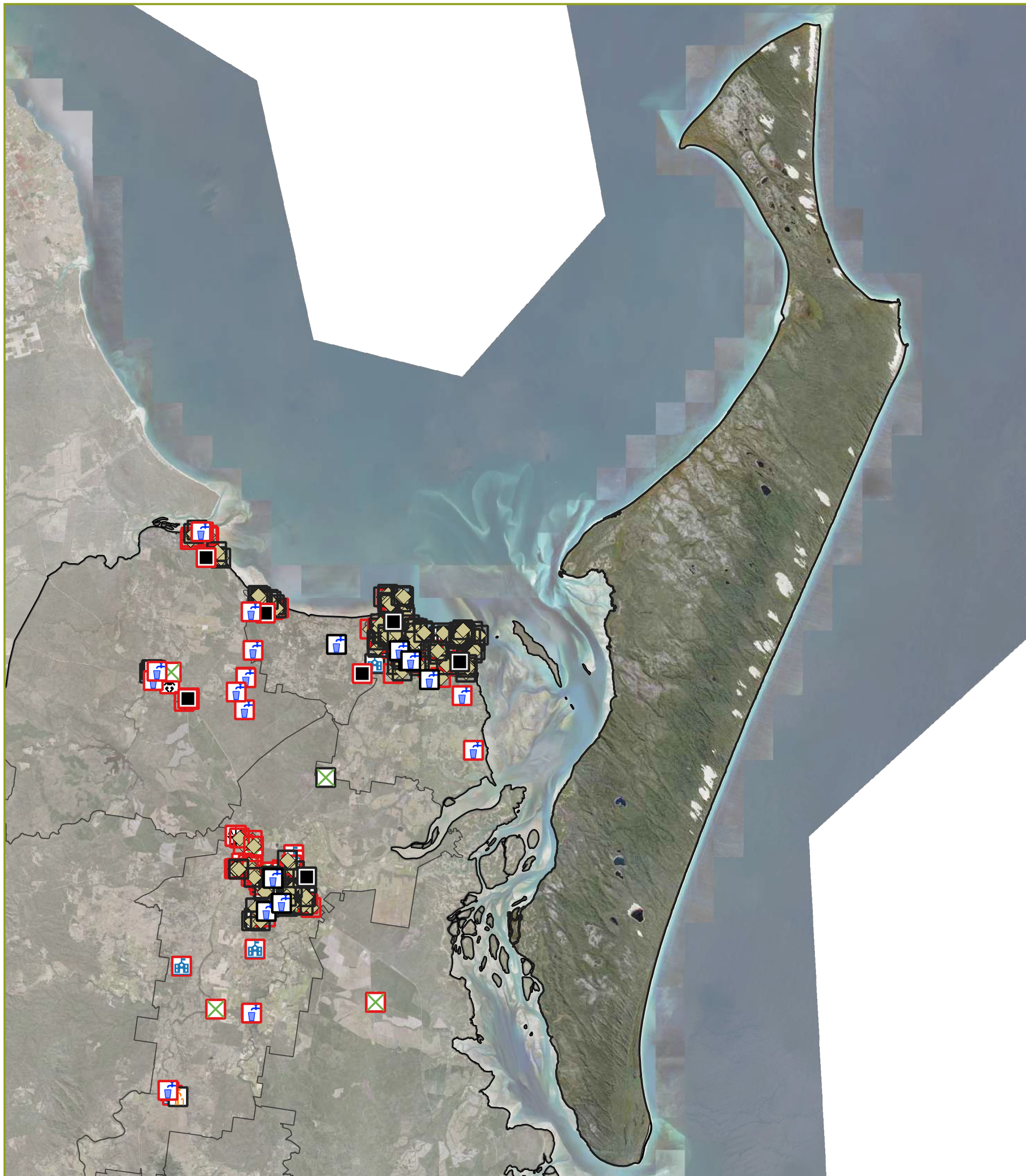


EXPOSURE OF VULNERABLE FACILITIES AND ESSENTIAL COMMUNITY INFRASTRUCTURE - ZONE 7 - FRASER ISLAND

FRASER COAST BUSHFIRE RISK ASSESSMENT

LEGEND

- |                             |                           |
|-----------------------------|---------------------------|
| Potential Bushfire Exposure | Vulnerable Facilities     |
| Not exposed                 | Aged Care                 |
| Exposed                     | Childcare Centre          |
| Critical Infrastructure     | Correctional Facility     |
| Sewerage Pumping Station    | Hospitals                 |
| Water Pumping Station       | Higher Education Facility |
| Wastewater Treatment Plant  | Schools                   |
| Water Treatment Plant       |                           |
| Zone Substations            |                           |



Project No: 22-024 Map No: 7 of 8

Coordinate System: GDA 2020 MGA Zone 56  
 Printed at: A3  
 Creation Date: 24/10/2022  
 Credits: Earthstar Geographics SIO, © 2021 TomTom, © OpenStreetMap



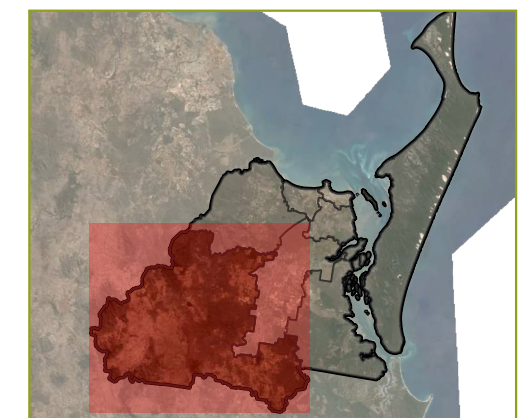
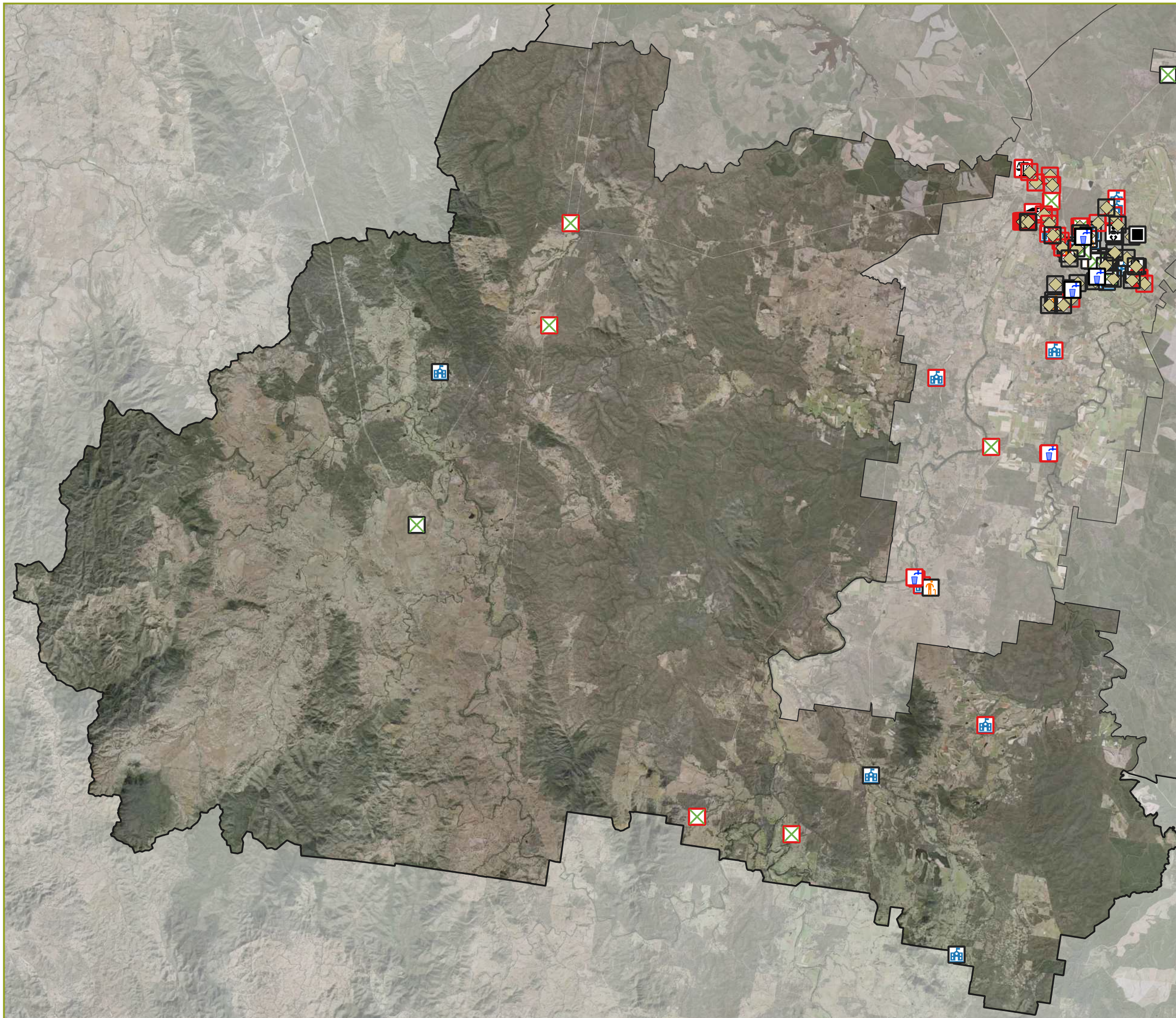


EXPOSURE OF VULNERABLE FACILITIES AND ESSENTIAL COMMUNITY INFRASTRUCTURE - ZONE 8 - RURAL AREAS

FRASER COAST BUSHFIRE RISK ASSESSMENT

LEGEND

- |                             |                           |
|-----------------------------|---------------------------|
| Potential Bushfire Exposure | Vulnerable Facilities     |
| Not exposed                 | Aged Care                 |
| Exposed                     | Childcare Centre          |
| Critical Infrastructure     | Correctional Facility     |
| Sewerage Pumping Station    | Hospitals                 |
| Water Pumping Station       | Higher Education Facility |
| Wastewater Treatment Plant  | Schools                   |
| Water Treatment Plant       |                           |
| Zone Substations            |                           |



Project No: 22-024      Map No: 8 of 8

Coordinate System: GDA 2020 MGA Zone 56  
 Printed at: A3  
 Creation Date: 24/10/2022  
 Credits: Earthstar Geographics SIO, © 2021 TomTom, © OpenStreetMap



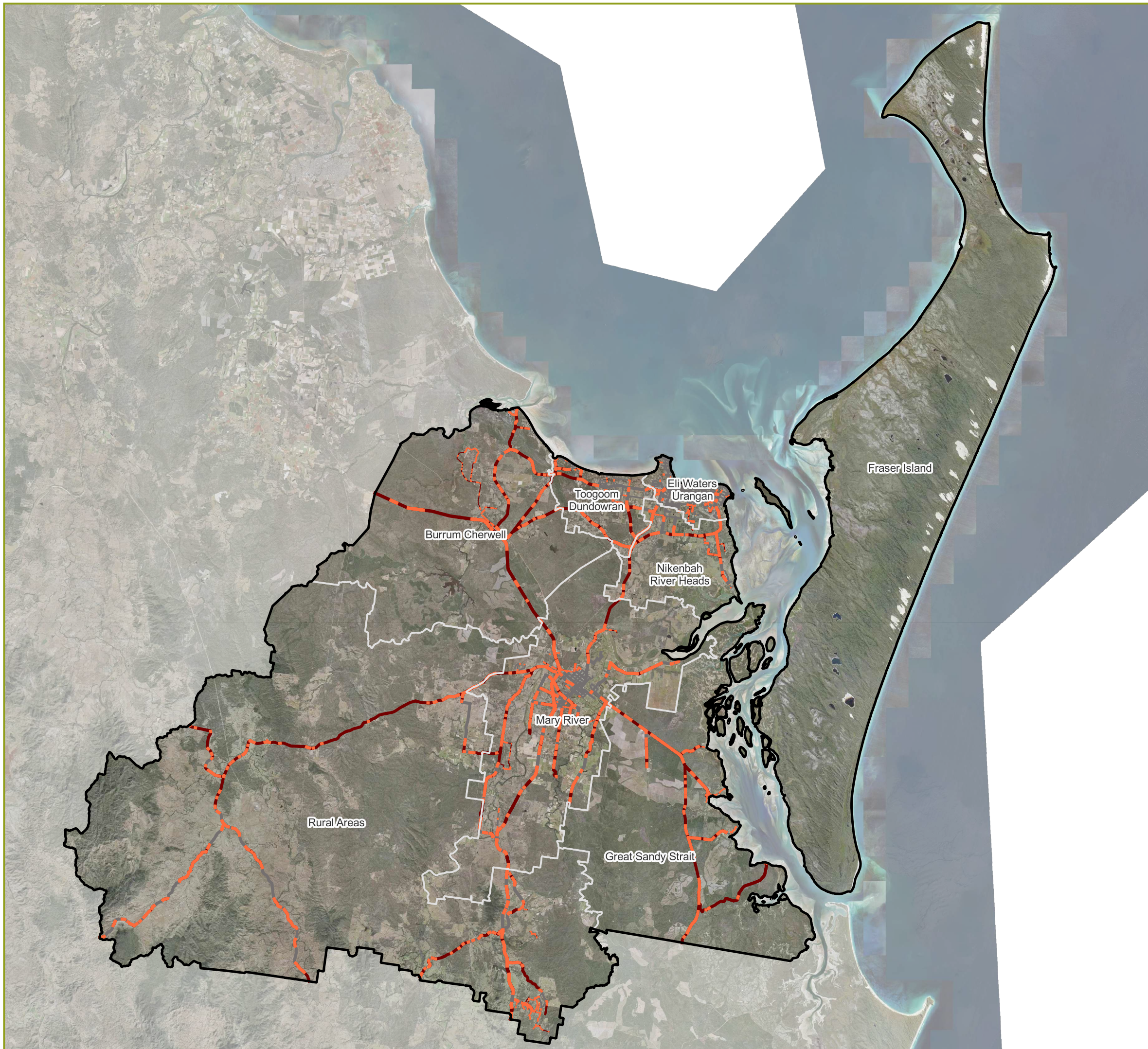


# FRASER COAST ROAD EXPOSURE

## FRASER COAST BUSHFIRE RISK ASSESSMENT

### LEGEND

Exposed to Hazard	Urban Arterial
Highway	Rural Arterial
Urban Arterial	Major Collector
Rural Arterial	Controlled Distributor
Major Collector	Minor Collector
Controlled Distributor	Not Exposed
Minor Collector	Highway
50m Buffer	Urban Arterial
Highway	Rural Arterial
Urban Arterial	Major Collector
Rural Arterial	Controlled Distributor
Major Collector	Minor Collector
Controlled Distributor	Boundaries
Minor Collector	Fraser Coast Regional
100m Buffer	Precincts Areas
Highway	



Project No: 22-024      Map No: 1 of 1

Coordinate System: GDA 2020 MGA Zone 56  
 Printed at: A3  
 Creation Date: 01/11/2022  
 Includes material © State of Queensland 2021 | © 21AT © Earth-i, all rights reserved | © Planet Labs Netherlands B.V., reproduced under licence from Planet and Geoplex, all rights reserved





