



GLENWOOD

# *Community Plan*

**2022 – 2042**



**Fraser Coast**  
REGIONAL COUNCIL



# CONTENTS

<b>INTRODUCTION</b>	4
<b>ABOUT US</b>	5
Acknowledgement of Country	5
Traditional Owners	5
<b>OUR COMMUNITY PLAN</b>	5
Our vision for the community	6
Pillar 1. Our Community	6
Theme 1.1 A community that values parks, open green spaces, and community recreational facilities	6
Theme 1.2 A developing economic sector catered to the community's need and is adequately planned for and supported	7
Theme 1.3 Improved accessibility throughout our community to support community safety, inclusion and connectedness	7

Theme 1.4 Supported development that is appropriate for our community's vision and culture	8
Pillar 2. Our Culture	9
Theme 2.1 A welcoming, inclusive, friendly and supportive community that embraces our quiet country feel	9
Theme 2.2 A community that feels safe	9
Theme 2.3 An engaged and supportive community	10
Pillar 3. Our Wildlife and Environment	11
Theme 3.1 A community that takes pride in our parks, open spaces, and our protection of native flora and fauna	11





<b>OUR COMMUNITY STATISTICS</b>	12
Our people	12
Population	12
Age structure	12
Household types	12
Our economy	13
Employment figures	13
Income	13
Housing	13
Dwellings	13
Occupied dwellings	13
<b>HOW WE DEVELOPED THE PLAN</b>	14
What is community planning	14
How we developed the community plan	14

The Community Plan Development Group	14
The Planning Process	15
Implementation	15



**Fraser Coast**  
REGIONAL COUNCIL

eDOCS Reference: #4407030  
Version: 1.0  
Prepared by: Coordinator Community Development,  
James O'Connor on behalf of the Glenwood Community  
Plan Development Group  
Date Update: May 2022  
Directorate: Development and Community



**The Glenwood Community plan sets a vision and direction for the future of our community. Developed by the people of our community and driven by a key representative planning group, the foundation of the plan is built on the principle of asset-based community development in enacting community led change.**

The community plan is not just a document for the Glenwood Community, it is important in sharing the community's voice, vision and aspiration to key stakeholders involved in the development of our town, social and community services, and for all levels of government.

The wider community engagement process undertaken in developing the plan shows a level of buy- in from the community in setting a foundation for improvement and further development. In engaging our community, we enhance our opportunity for direct input into future planning and in turn we are creating a strong independent community.

In developing the plan, we identified key community stakeholders, community strengths and weaknesses and looked at how these related to the values we hold as a community, what we feel is important to us as a community, and what we envisage the community looking and feeling like. Through this analysis we identified three key pillars that form the foundation of the community plan, associated themes and identified actions.



**OUR COMMUNITY**



**OUR CULTURE**



**OUR WILDLIFE AND ENVIRONMENT**

The plan focuses on development over a 20-year period; however, it is identified that the plan is a living document. With the forecasted growth in our population as identified in the Population section of this document, it is understood that this plan will need to be reviewed and updated on a regular basis in keeping with the changing needs of our community.

*Glenwood Community Planning  
Development Group*



*Introduction*



## ACKNOWLEDGEMENT OF COUNTRY

We acknowledge the Gubbi Gubbi people as the traditional owners and custodians of the lands and waters of our community.

We recognise that this has always been a place of cultural, spiritual, social and economic significance and respect the spiritual relationships and stories that have developed over tens of thousands of years. We understand that this is a living culture and remains important to the Gubbi Gubbi people.

This rich heritage and the strength and prosperity of the Aboriginal people is important to the resilient, vibrant community.

## TRADITIONAL OWNERS

The Gubbi Gubbi people are the Traditional Custodians of the land located in South East Queensland, within the Moreton Bay, Sunshine Coast, Noosa and Gympie region.

The traditional lands of the Gubbi Gubbi people stretched from the northern banks of the North Pine River in the south; to Burrum River in the north near Maryborough and to the Conondale Ranges in the west. Their traditional lands include Redcliffe, Bribie Island, Sunshine Coast, Noosa, Maryborough, Gympie, Caboolture and Petrie.

The Gubbi Gubbi people are the Traditional Owners of the land whose traditional lands include beaches, lakes, rivers, creeks, mountains and rainforests.

(Gubbi Gubbi Dyungungoo, 2021)

# Our Community Plan

## OUR VISION FOR THE COMMUNITY

By 2042 Glenwood will be a diverse fast-growing community with a strong forward-looking community spirit, with community groups who encourage and facilitate community activities catering for all ages. As a community we celebrate our community for its involvement, peaceful environment, rural lifestyle, and community spirit.

The Glenwood community will be:

- made up of community who are proud to be a "Glenwoodian";
- supportive of community activities, and events;
- protective of its native flora and fauna;
- a community that works as one;
- an active community that encourages and welcomes new residents; and
- Supportive of new businesses.





## PILLAR 1: OUR COMMUNITY

We support the growth of a well-supported community that values our parks and open green spaces. As a growing community, we welcome appropriate development that works to support the culture of our community to maintain a desired way of life for the people of Glenwood.

Our connections through our community is a significant value to meet the needs of an accessible and inclusive place to live. We advocate for a stable, supported, developing economy and the need for space within the community to grow our business and community service potential.

### THEME 1.1 A COMMUNITY THAT VALUES PARKS, OPEN GREEN SPACES, AND COMMUNITY RECREATIONAL FACILITIES

We must have adequate recreational and green spaces that are required for an active and cohesive community. These spaces must be designed and maintained to fit our community's needs and culture, including soft and hard infrastructure. We support the need to identify more open space within the planning scheme to support our growing community and growing needs.

#### Short Term Initiatives

- ✓ Provide a space where people feel welcome and safe to share their views and ideas about the community.

#### Medium Term Initiatives

- ✓ Promote as the voice for the Glenwood community, a co-operative representative group made up of representatives of community groups.

- ✓ Maintain parks and open spaces

#### Long Term Initiatives

- ✓ Work with Council to identify trails and networks. Ensure they are maintained to encourage people to engage with their natural environment.

## THEME 1.2 A DEVELOPING ECONOMIC SECTOR CATERED TO THE COMMUNITY'S NEED AND THAT IS ADEQUATELY PLANNED FOR AND SUPPORTED

We advocate for increased appropriate retail, commercial, and industrial development opportunities for our town. We support the need to identify commercial/retail space within the planning scheme to support our economic growth.

### Short Term Initiatives

- ✓ Continue to promote and grow the Glenwood Markets by encouraging community members to engage and support local activities, events, and business.
- ✓ Identify the feasibility of a medical facility and services in response to community needs.

### Medium Term Initiatives

- ✓ Attract investment from speciality stores such as a hardware store.
- ✓ Advocate for allocation of commercial land.
- ✓ Work with all levels of government to identify opportunities to allocate open spaces and develop/construct facilities that accommodates the growth in the region.

### Long Term Initiatives

- ✓ Work with Council to identify and where feasible, introduce customer service opportunities including but not limited to library services.
- ✓ Determine, and where feasible advocate for the attraction of aged care accommodation
- ✓ Seek opportunities and interest to attract the investment for a new supermarket.

## THEME 1.3 IMPROVED ACCESSIBILITY THROUGHOUT OUR COMMUNITY TO SUPPORT COMMUNITY SAFETY, INCLUSION AND CONNECTEDNESS.

Connections through our community are essential as a building block for a growing town. As our population increases, the traffic on our roads and the need to meet a diverse range of conditions changes. To assist in building a safe community, we need infrastructure that meets the demand and service options for access and inclusive public transport.

### Short Term Initiatives

- ✓ Liaise with Department of Transport and Main Roads to identify when the next review of services is scheduled for to ensure the community have an opportunity to provide feedback about access to public transport.
- ✓ Identify where the access points for public transport are and identify if they are located in flood prone/appropriate areas.

- ✓ Lobby appropriate levels of government for solutions to road safety concerns.

### Long Term Initiatives

- ✓ Investigate any future plans for bus shelters, pathways, and develop walking/riding trails that promote connectivity, health and wellbeing.



## THEME 1.4 SUPPORTED DEVELOPMENT THAT IS APPROPRIATE FOR OUR COMMUNITY'S VISION AND CULTURE.

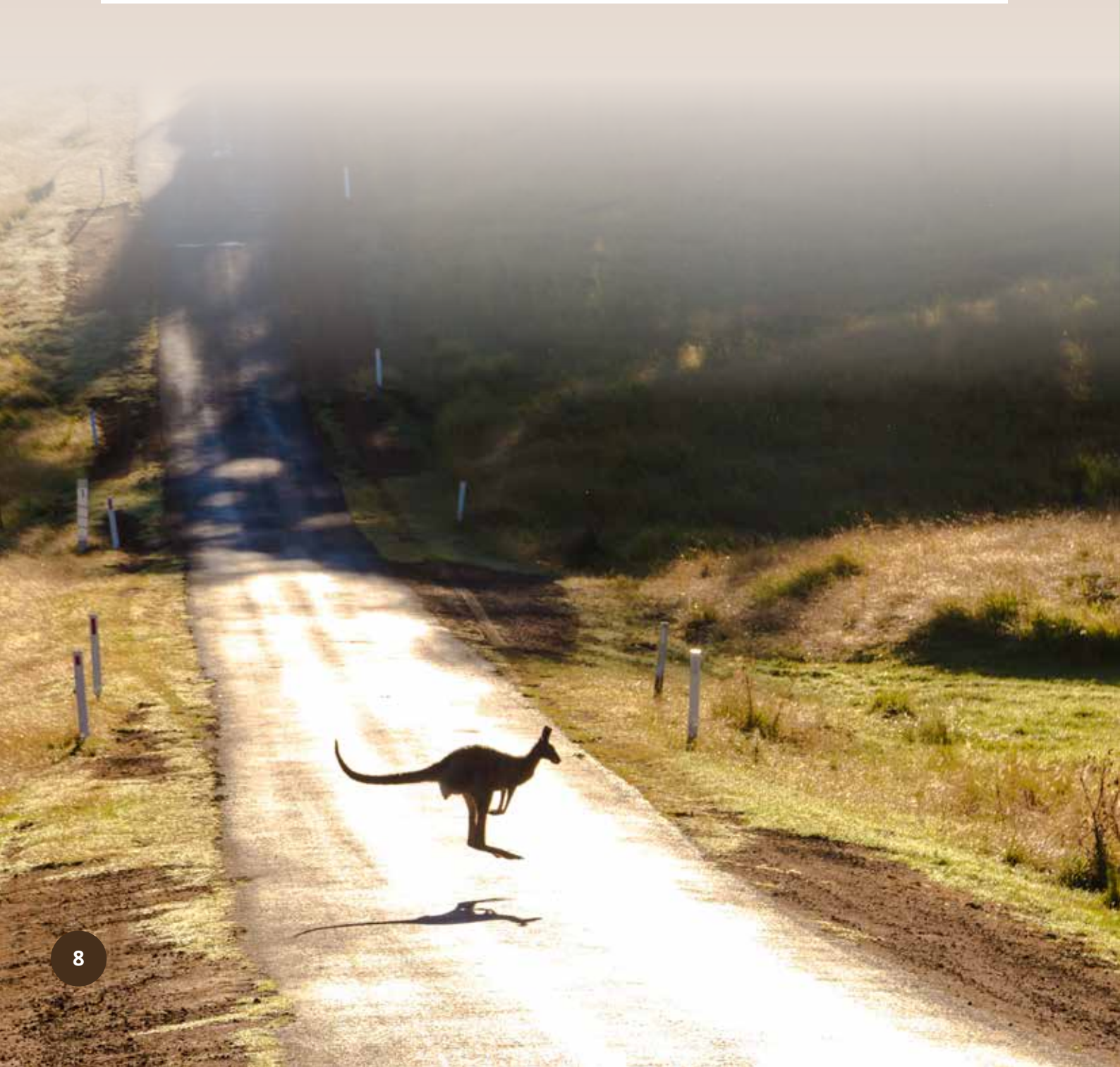
As a growing community, Glenwood supports a range of developments that meet the needs of our population. We value and support the need for appropriate planning specifications and enforcement of these requirements that protect our way of life and our community.

### Short Term Initiatives

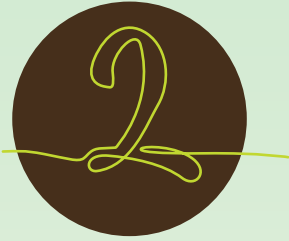
- ✓ Seek opportunities for funding, and advocate for the development of a community hub space in line with the community precinct masterplan.

### Medium Term Initiatives

- ✓ Advocate for industry development is maintained no higher than light industrial.







## PILLAR 2: OUR CULTURE

As a small community, we aspire to be a supported community with a rural feel where people want to live. We are proud to have welcoming and friendly neighbourhoods that value knowing your neighbours and being actively involved in the community we call home. We support a community that feels safe, inviting and accepting.

### THEME 2.1 A WELCOMING, INCLUSIVE, FRIENDLY AND SUPPORTIVE COMMUNITY THAT EMBRACES OUR QUIET COUNTRY FEEL.

We take pride in having a community that is connected, inclusive, and supportive. We strive to be a town where people want to live, to feel respected and valued. We value the peace and tranquillity that comes with a small country township.

#### Short Term Initiatives

- ✓ Liaise with all levels of government to develop and construct a welcome sign for Glenwood that aligns with the theme of all other welcome signs on the Fraser Coast.
- ✓ Work with Council to promote a positive profile of this community. Promote Glenwood identifying it as the gateway to the Fraser Coast. Identify Glenwood's strengths as a community.
- ✓ Seek opportunities for free camping areas to attract visitors to our community.
- ✓ Invite the Fraser Coast Tourism and Events General Manager to a meeting to create awareness of the town and what it has to offer

- ✓ All community groups working together to create an atmosphere that encourages thriving activity, where people feel safe and welcome.
- ✓ Have a "group of the month" profile in the community newsletters, promoting the group and ways to connect with them. E.g. Glenwood Garden Gathers

#### Medium Term Initiatives

- ✓ Provide information for the FCRC website to encourage residents and visitors to visit the area.
- ✓ Seek opportunities for the development of a visitor information centre in Glenwood, as the gateway to the Fraser Coast.

### THEME 2.2 A COMMUNITY THAT FEELS SAFE

We value our safety and our neighbours and contribute effectively to strategies that reduce crime and contribute to a sense of security in our town.

#### Short Term Initiatives

- ✓ Promote opportunities for volunteer involvement in local emergency services
- ✓ Advocate for a greater police presence in the community as a proactive crime prevention method.
- ✓ Seek to understand the community need and feasibility of an emergency services hub including ambulance, police, fire and emergency services, and SES.

- ✓ Understand the current demand on ambulance service for the Glenwood Community and advocate for appropriate service allowances within the community to improve response times.

#### Medium Term Initiatives

- ✓ Development of resilience packs for individual sections of the community which become isolated during flooding events.



## THEME 2.3 AN ENGAGED AND SUPPORTIVE COMMUNITY

The Glenwood community is based on a culture of mateship and comradery where we support and help each other out. As a community, we are actively engaged in the whole community where we treat each other with honesty and respect as we work together for the greater good.

### Short Term Initiatives

- ✓ Conduct a community skills audit to identify people strengths within the community.
- ✓ Investigate opportunities for Council to provide education on disaster management preparedness.
- ✓ Encourage young people in the community to participate in Fraser Coast Regional Council's engagement activities for youth specific matters.
- ✓ Reduce the gap of connectedness between young people and the community
- ✓ Develop a program of events throughout the year that will be delivered in the centre. Offer outside service to deliver workshops in the area
- ✓ Use the Fraser Coast Regional Council's customer services enquires or complaints processes to inform Council of any concerns or feedback. Community members can also utilise the "Councillor Chat" opportunities to discuss any concerns or aspirations for the area.

- ✓ Identify and seek funding opportunities for youth-oriented facilities.

### Medium Term Initiatives

- ✓ Investigate opportunities to develop a community garden in Glenwood
- ✓ Encourage Council to have a presence in Glenwood to answer questions and educate resident on the processes within Council. EG: Off leash areas for dogs, DA processes, Economic Development Plans.
- ✓ Seek and apply for funding to construct a community noticeboard for the three entrances to the Glenwood community.

### Long Term Initiatives

- ✓ Investigate, and where feasible, advocate to change the Glenwood postcode to align with the Fraser Coast Region, to assist in alignment to medical catchment areas and, postal services.





## PILLAR 3: OUR WILDLIFE AND ENVIRONMENT

Our Flora and Fauna is an integral part of who we are as a community. We strongly support and advocate for protecting our wildlife and environment to ensure its sustainability in the development of the community's future.

### THEME 3.1 A COMMUNITY THAT TAKES PRIDE IN OUR PARKS, OPEN SPACES, AND OUR PROTECTION OF NATIVE FLORA AND FAUNA

Our Wildlife and Environment is integral to us as a community. We strongly advocate for the protection of our Flora and Fauna and for projects and initiatives that support sustainability for the future. We foster a culture of respect and encourage our community to embrace our Wildlife and Environment

#### Short Term Initiatives

- ✓ Identify opportunities to reduce animal fatalities on our roads.
- ✓ Promote and support plant a tree initiatives.
- ✓ Native flora and fauna awareness programs.
- ✓ Seek opportunities to include in our community animal water facilities for native wildlife.
- ✓ Seek to introduce land management initiatives to support flora and fauna conservation.



## OUR PEOPLE

### POPULATION

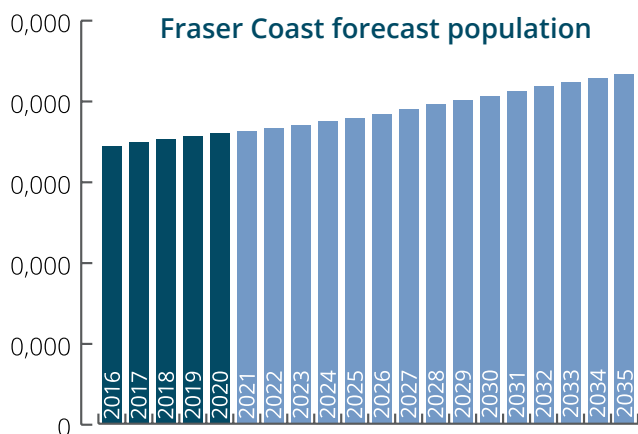
The 2021 population of Glenwood is approximately 1,925. The population is based on 52.6% people identifying as male and 47.2% of people identifying as female.

2.8% of the population are indigenous, 87.3% Australian citizens, 71.4% Australian Born and 2.9% of the community speak a language other than English at home

### POPULATION FORECAST

The overall population of the Fraser Coast Regional Council LGA (Local Government Area) is set to increase significantly over the next 10-20 years. Based on the current growth trends from 2016 the LGA will see a growth rate of 27.50% between 2021 and 2041.

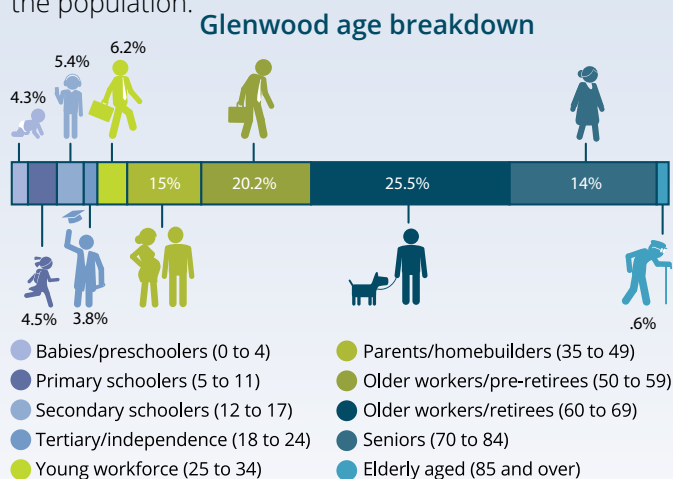
Whilst the LGA is set to see a large growth rate, Glenwood is set to see a slightly larger overall growth rate percentage of 30.95% over the same period, rising from 1,925 to 2,520 by 2041.



Source: Australian Bureau of Statistics, Census of Population and Housing 2011 and 2016. Compiled and presented by .id (informed decisions).

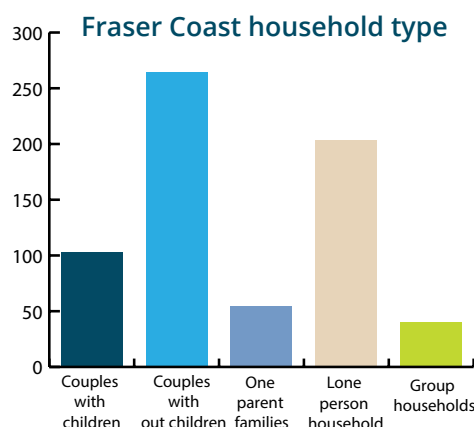
### AGE STRUCTURE

The largest portion of our community are empty nester and retirees aged between 60 and 69, making up 25.5% of the overall community. This is closely followed by older workers and pre retirees aged between 50 to 59 who account for 20.2% of the population.



### HOUSEHOLD TYPES

Couples without children make up 36.5% of our community and 28.1% of lone person households account for the largest portion of household types. Couples with children and one parent families attributed to 21.7% percent with the remaining 5.5% accounted for as group households.

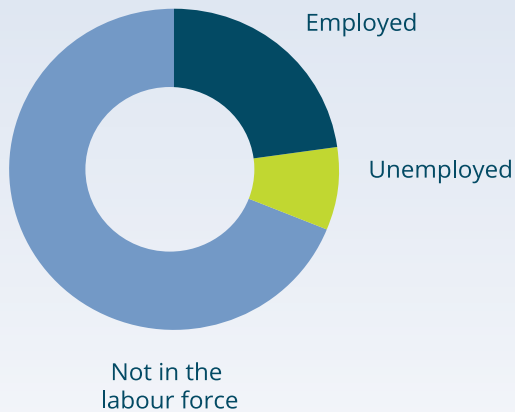




## OUR ECONOMY

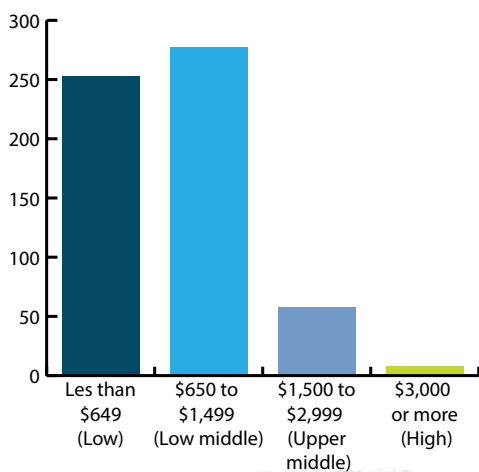
### EMPLOYMENT FIGURES

As a small community we have a relatively moderate unemployment rate of 8%, with over 60% of the population considered not to be in the labour force which correlates directly with age demographic and household composition.



### INCOME

The majority of our residents (41%) are considered to have a lower middle income in the range of \$650 to \$1,499 a week, followed by 37.5% who sit within the low-income bracket of less than \$650 a week. High income earners, those earning \$2,500 or more a week account for only 1.2% of residents.



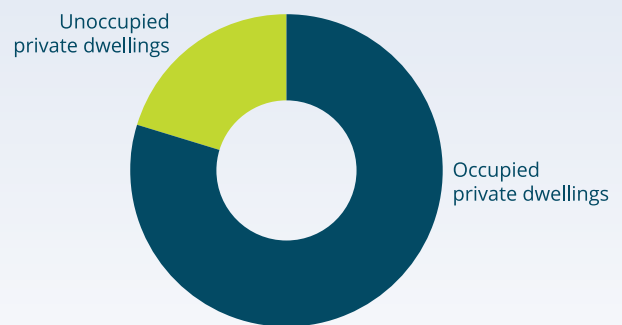
## HOUSING

### DWELLINGS

Our community's residential housing mainly consists of separate houses accounting for 94.8% of dwellings in the Glenwood Community.

### OCCUPIED DWELLINGS

Out of those identified dwellings 84.4% are privately occupied, with 15.6% unoccupied.





# How we developed the Plan

## WHAT IS COMMUNITY PLANNING

Community Planning is an important mechanism for identifying and understanding community aspirations and priorities; and is a process that is designed to enact and empower that community to carry ownership for the development and improvement of their community's.

The ownership of the community plan sits with the people of the community; delivery of the plan is not the designated responsibility of a sole person, organisation, or level of government.

A community consultative group outlined and identified a vision for the community, key community objectives, priority projects and actions, primary and key stakeholders, and vision for implementation of short, medium- and long-term priorities.

The community planning process provides a 'whole of community' approach in terms of input into the community plan's foundation and in identification and prioritisation of specific key projects.

## HOW WE DEVELOPED THE COMMUNITY PLAN

The community planning process was a project facilitated by Fraser Coast Regional Council's Community Development and Engagement team. Council commenced the project by calling for expressions of interest from community members in forming a Community Plan Development group, in keeping with the approach of building community ownership over the process.

### The Community Plan Development Group

In August 2020 Council sought expressions of interest from members of the community, seeking people who have a vision for the Glenwood Community and a drive to enable change.

The purpose of the group was to:

- ✓ Set the foundation of the community plan
- ✓ Drive community planning by the community, in line with Asset Based Community Development principles
- ✓ Establish a Community point of reference for the planning process

The role of participants was to:

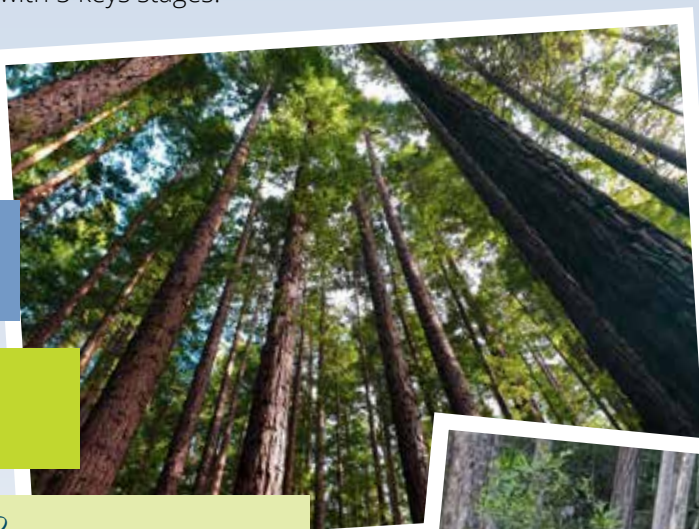
- ✓ Drive the community planning process
- ✓ Identify key stakeholders and focus groups
- ✓ Champion the plan in the community and promote the collaborative work undertaken to build a collective vision for their community
- ✓ Work with Council to facilitate focus groups with specific stakeholders
- ✓ Provide local knowledge, history and insights to assist in the planning process
- ✓ Becoming a local source of knowledge on the community plan for local residents
- ✓ Identify and develop components that form the Community Plan
- ✓ Review community feedback and adapt plan as required





## The Planning Process

The community planning process was undertaken with 5 keys stages.



# Implementation

Implementation of the plan will be undertaken by the community in a staged process. Community led change is the key in delivering upon the vision, pillars and themes. Community groups and residents are encouraged to work together in the implementation of the identified projects, relevant planning, and advocacy.

Fraser Coast Regional Council will work with the Community Plan Development group, and associated project teams in supporting the facilitation of the project's development and implementation.





*Fraser Coast*  
REGIONAL COUNCIL

The Glenwood Community Plan has been developed in partnership with the Fraser Coast Regional Council, Glenwood Community Plan Development Group, and residents of the Glenwood Community.