

## The Queensland Emergency Risk Management Framework (QERMF)

As defined within the roles and responsibilities outlined by the State Disaster Management Plan (SDMP), Queensland Fire and Emergency Services (QFES) is responsible for state-wide disaster risk assessments.

Through the development and maturation of the Queensland Emergency Risk Management Framework (QERMF), Queensland's endorsed approach to disaster and emergency risk management, QFES seeks to uphold international best practice as championed by:

- The United Nations Office for Disaster Risk Reduction (UNISDR);
- The Global Facility for Disaster Reduction and Recovery (GFDRR); and
- The Sendai Framework for Disaster Risk Reduction.

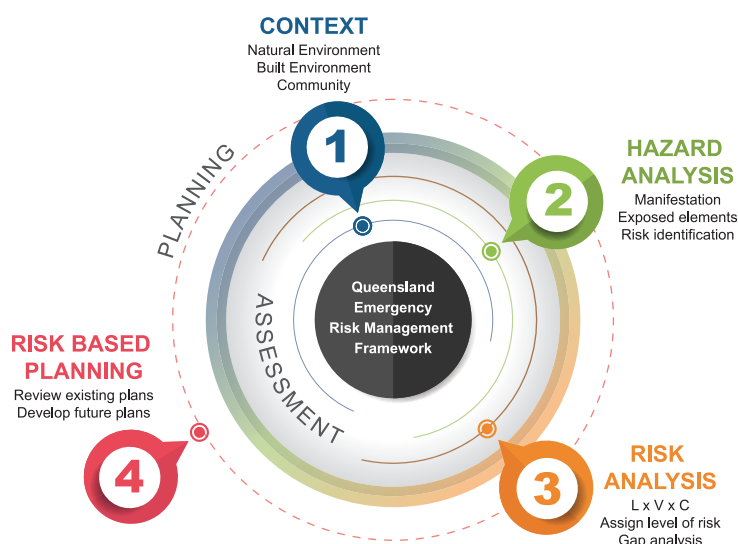


Figure 1 - Queensland Emergency Risk Management Framework

QFES seeks to lead disaster risk management through establishing partnerships and championing the work of lead agencies in hazard risk identification, mitigation and resilience. Through these partnerships we are delivering the following State level initiatives across Queensland's Disaster Management Arrangements:

- The State Earthquake Risk Assessment and companion Tsunami Guide for Queensland (in partnership with Geoscience Australia and the University of Queensland);
- The State Heatwave Risk Assessment (in partnership with Queensland Health and the Department of Environment and Science);
- The Severe Wind Hazard Assessment for Queensland (a multi-agency project led by QFES and Geoscience Australia); and
- The State Disaster Risk Report 2020, an update to the State Natural Hazard Risk Assessment 2017, which includes a broader scope, encompassing both natural and anthropogenic hazards.

The outcomes of these initiatives tangibly support Local and District disaster management planning by providing scientifically underpinned, lead agency risk information that can be rationalised to each Local Government Area (LGA).

Completion of the QERMF risk assessment process will enhance the ability of Local and District Disaster Management Groups to achieve the relevant components of the Emergency Management Assurance Framework (EMAF) and maps a pathway to achieving the four key objectives of the Queensland Strategy for Disaster Resilience (QSDR).

## Approach to Hazard Identification

The identification of current and future hazards, under the influence of climate change, to be assessed via the QERMF is based on lead agency research and information. Through a continual review process, QFES seeks to ensure that Local and District disaster management groups have the best information at hand when assessing hazard risk pertinent to their area of responsibility.

The “QERMF Hazard Wheel” below provides an overview of the considerations put forward by the Hazard and Risk Unit throughout the risk assessment process.

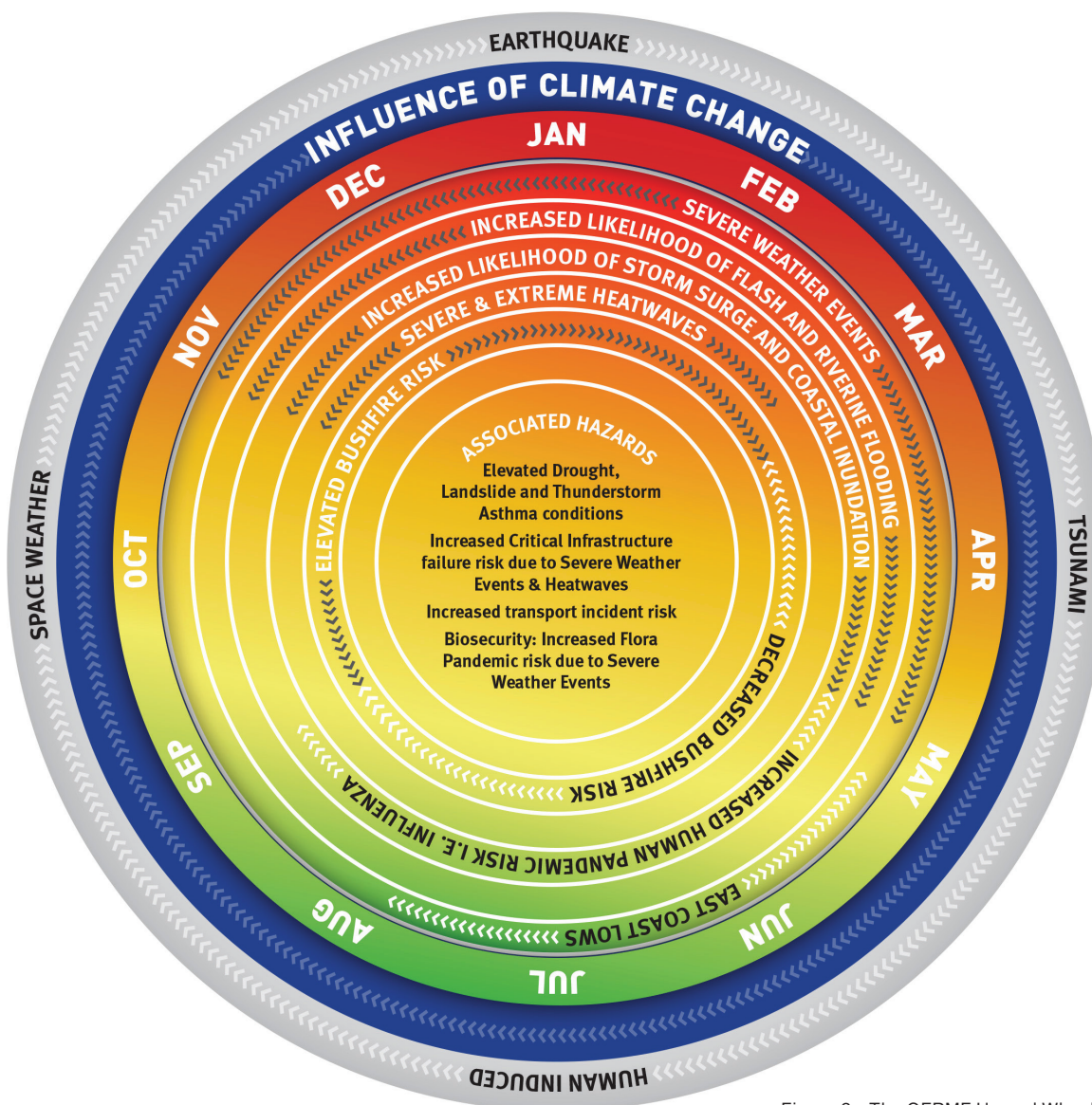


Figure 2 - The QERMF Hazard Wheel

This diagram seeks to indicatively demonstrate those hazards which may impact Queensland on an annualised basis, whilst conveying the affect of climate change on these hazards (blue ring). The annual “higher risk period” is highlighted by the orange to red areas, whilst the “lower risk period” is highlighted by the green area. The grey ring highlights those “outlier hazards” that may manifest at any time but which generally have a very low probability of occurrence annually. The grey ring does however represent those hazards which, if they were to manifest, would be expected to result in significant consequences to Queensland.

## Geospatial Intelligence

QFES provides Local and District Disaster Management Groups with best practice geospatial intelligence across all phases of the disaster and emergency management cycle of Prevent, Prepare, Respond and Recover (PPRR). Through provision of an online Risk Assessment Tool, disaster management planners are empowered at all levels with the ability to conduct risk assessments and develop risk based plans utilising the best available data to highlight those elements at risk within their jurisdiction.

The QERMF Risk Assessment Tool is managed in accordance with the Queensland Government Chief Information Office's (QGCIO) Information Sharing Authorising Framework and links to the Disaster Management Data Coordination Initiative (DMDCI) led by QFES.

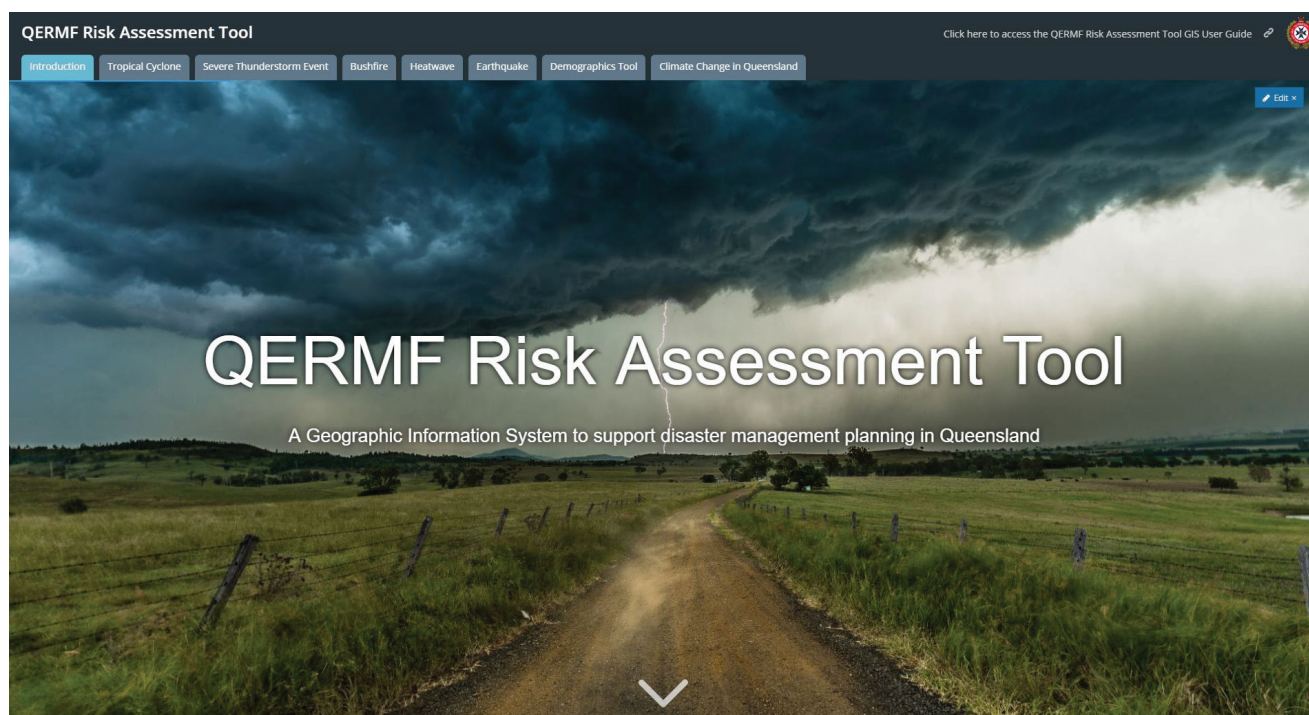


Figure 3 - QERMF Risk Assessment Tool

## The Management of Residual Risk

The application of the QERMF methodology within the assessment process enables the accurate identification of risk via an analysis of exposure and vulnerability. This assists communities to tailor their planning to build appropriate mitigation and resilience strategies aimed at reducing residual risk across all levels. Application of this approach at all levels of QDMA enhances the 'three lens approach' (as highlighted in Figure 4 overleaf) to disaster risk reduction and can lead to enhanced support arrangements between disaster groups and support agencies to manage risk. Implementation of this framework will assist District and State Disaster stakeholders positioning themselves to provide targeted support, upon request/when required, in a timely manner down to the Local Government level.

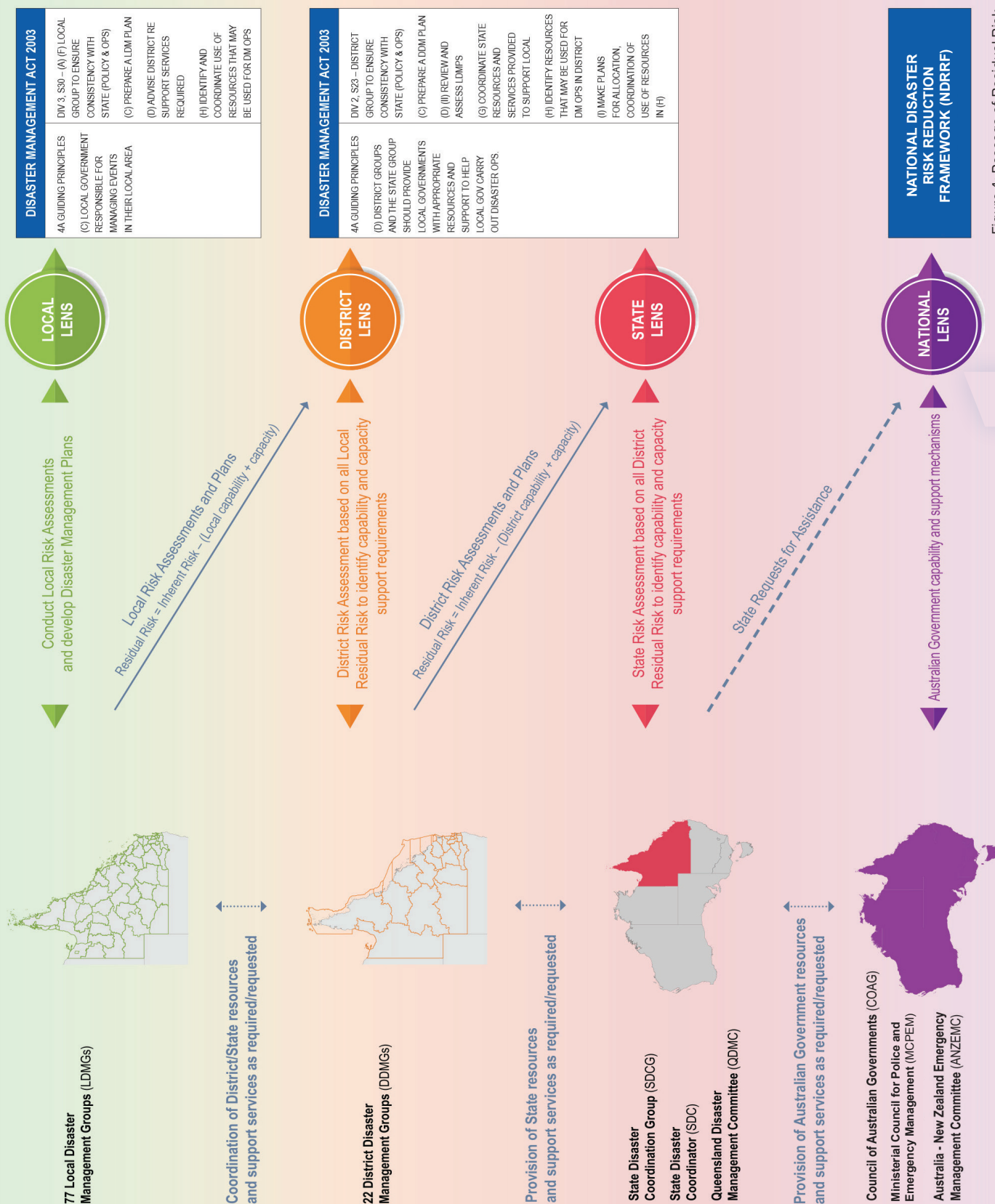
Communication of residual risk will be enhanced through the development of the QERMF Risk Information Portal. This Portal seeks to provide a collaborative workspace to enable shared responsibility for risk management across Local, District, and State levels.

The residual risks identified at all levels of QDMA will provide a foundation for the State Risk Report 2020.





## Passage of Residual Risk



## QERMF related material

- All material relating to the QERMF can be accessed through the “Risk (QERMF)” page on the Queensland Government’s Disaster Management website, and through the following link: [Risk \(QERMF\)](#).
- The QERMF Risk Assessment Handbook is designed to assist Local, District and State level disaster management practitioners in undertaking the 4 steps of the Framework as outlined in Figure 1 and provides further guidance on the all hazards approach, planning disaster management and risk governance.
- All QERMF related material is reviewed annually to ensure that all content incorporates relevant changes in State, Federal and International best practice.
- Additionally, the Hazard and Risk Unit, in partnership with the Emergency Management Training Command (EMTC) have developed an online awareness package for practitioners wishing to gain further insight in to the QERMF.
  - The QERMF Awareness Package can be accessed through the Disaster Management Learning Management System ([DMLMS](#)).

## The Hazard and Risk Unit

The Hazard and Risk Unit, Community Resilience and Risk Mitigation Branch, QFES, is responsible for the implementation and maturation of the QERMF, as well as the conduct of hazard based risk assessments. These assessments seek to inform the subsequent development of risk based plans across all levels of Queensland’s Disaster Management Arrangements (QDMA).

### Our Purpose:

Whilst substantial challenges remain in fully assessing disaster risk there is a deeper understanding that disaster and emergency risk management requires many partners working cooperatively and sharing information.

The purpose of the Hazard and Risk Unit therefore is to:

*Provide a consistent State-wide approach to assessing hazard related risk whilst facilitating greater stakeholder collaboration and understanding in the management of hazard based risk across all levels of the QDMA.*

### Our Five Aims:

1. Use a scientifically underpinned, multidisciplinary and methodological all hazards approach to determine the vulnerability of systems, structures and locations across the QDMA;
2. Engage all disaster management aligned stakeholders across the QDMA through collaborative risk assessment workshops;
3. Provide a formal mechanism to manage and address residual risk;
4. Engage with State agencies on behalf of Local Government and District Disaster Management Groups; and
5. Formalise the output of Local and District risk assessments within the State Risk Register.

### Contact

For further information on the QERMF, the Hazard and Risk Unit, or the initiatives outlined above, please do not hesitate to contact us via the methods outlined below:

#### Hazard and Risk Unit

#### Community Resilience and Risk Mitigation



Emergency Management and Community Capability

Queensland Fire and Emergency Services

☎ (07) 3635 1563

💻 [Hazard.Risk@qfes.qld.gov.au](mailto:Hazard.Risk@qfes.qld.gov.au)