

Extension of Recycled Water Service along Vanderwolf Road Alignment

Proposed extension of recycled water service

Council is undertaking a 'Market Sounding' process with landholders along the proposed recycled water alignment on Vanderwolf Road, Bunya Creek.

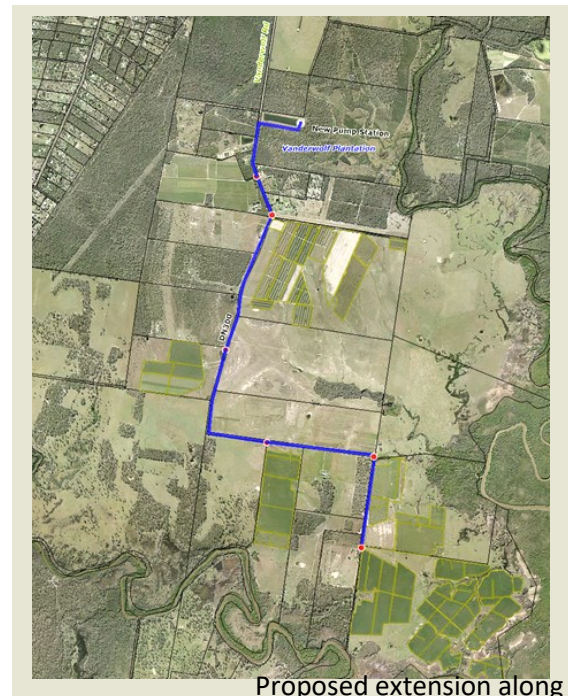
Q: Why is this service being extended?

A: The Hervey Bay Reuse Scheme is reaching capacity and requires expansion. The **2023 Fraser Coast Recycled Water Strategy** has identified expansion of this scheme south along Vanderwolf Road to service existing agricultural farming enterprises in the area. This includes the development of additional storage to meet compliance objectives.

Q: What is included in this project?

A: This expansion is part of an overall staged approach for the region which allows for adaptation in line with changes in future use.

The proposed project incorporates storage, pump stations and around 6.5 KM of pipeline for customer connections.



Proposed extension along Vanderwolf Road



Q: Why is Council investing in recycled water when there are so many other projects which need attention?

A: Fraser Coast Regional Council’s recycled water schemes have been in place for more than 25 years and routinely use 90% to 100% of the Fraser Coast’s treated wastewater. Irrigation currently occurs on sugar cane farms, golf courses, turf farms, sporting fields and tree plantations

This program minimises the discharge of treated effluent into the Great Sandy Straits by using it on land first. The local economy is also supported by making it a valuable water resource for irrigation for farmers. In addition, it assists Council to meet the “no net decline in water quality” entering the Great Barrier Reef legislated by the Queensland Government.

What type of water quality will this new service provide?

A: The Fraser Coast scheme is currently defined as a Class B provider and user of recycled water for low exposure Agricultural and Municipal uses. The framework to establish this definition is drawn from Public Health Guidelines and will continue to apply. Class B water is suitable for uses including certain cooked or processed human food crops, livestock grazing and fodder.

Q: How much will it cost me to access this service?

A: Final costs are currently being determined, and will hinge on the results of our stakeholder consultations.

Q: How long will it take to construct this new recycled water extension?

A: Estimates are between two and three years from project initiation, weather depending.

Q: How reliable will access to this service be?

A: The annual allocation volume available from construction is up to 900 ML and will increase over successive years. Council estimates that there will be an 95% reliability with this product. This means, there is a chance that up to 5% of the time, this service will not be able to be delivered, either due to drought or flood, or other event.



View of recycled water retention basin on Vanderwolf Road, Bunya Creek.