



# Maryborough

## Old Admin Site

# Maryborough



This document is intended to act as a guide for the future design and development of this site.

The overarching vision for the old Maryborough administration building site is to create an integrated civic precinct that respects the historical significance of the site whilst providing a connected, functional and flexible community space for all to enjoy.

This master plan draws together key design principles and values to create a vibrant and functional community space:

- Access and connectivity
- Activation and events spaces
- Greener spaces
- Preservation and enhancement of heritage features

Queens Park

Lennox Street

Station Square

City Centre

Kent Street

School of Arts

City Hall

City Centre

# CONCEPT PLAN



The proposed pathways connect the site to the broader context. These follow the desire lines between existing parking lots, City Hall, the city centre and Adelaide street where markets are held.

## Legend

- 1. Old baby clinic
- 2. Bus stop
- 3. Activated space with permanent and temporary seating
- 4. School of Arts display and movie wall
- 5. Seating steps
- 6. Garden bed with seating edge
- 7. Pergola covered walkway and entrance statement
- 8. Connecting walkway
- 9. Garden bed
- 10. Clay drain inlay
- 11. Low foliage feature planting such as bush tucker shrubs

# CONCEPT IMAGERY



The exposed brick wall on the School of Arts building is positioned perfectly to be utilised as a movie screening wall, light scapes, to display the works of local artists or the history of Maryborough.





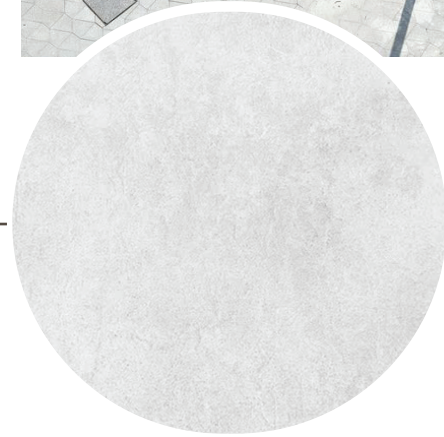
# PAVING

The use of a distinct paving design gives the site a strong visual identity. The pavement style will flow from the street into the site, drawing users through the space and integrating the street as a part of the new civic park.

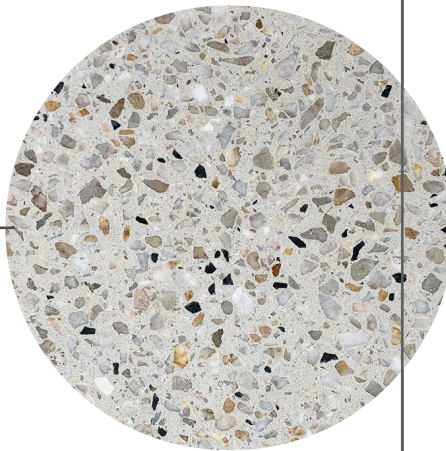
Example of a paving pattern that flows from one space into another.



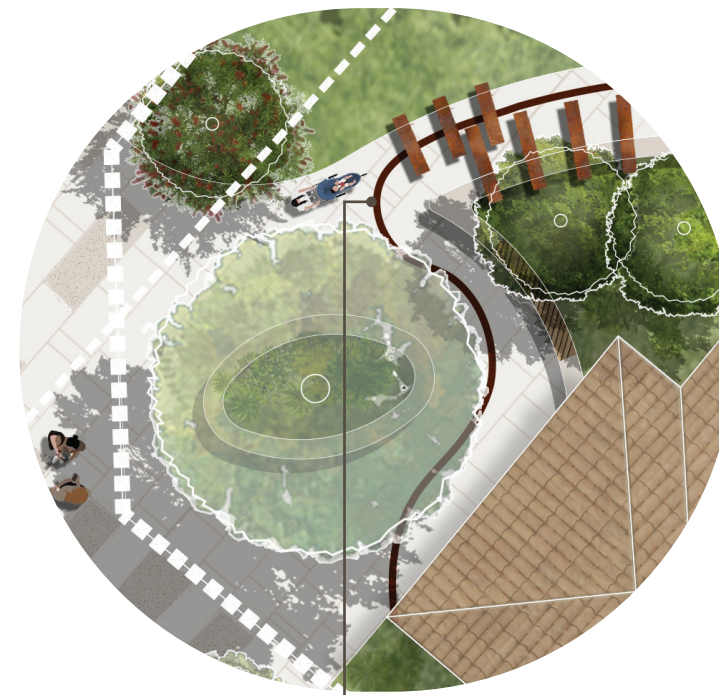
Broom Finish Concrete Detail.



Exposed Aggregate Detail.



New pedestrian crossing to safely connect city hall to the new civic park.



Clay Drain Inlay

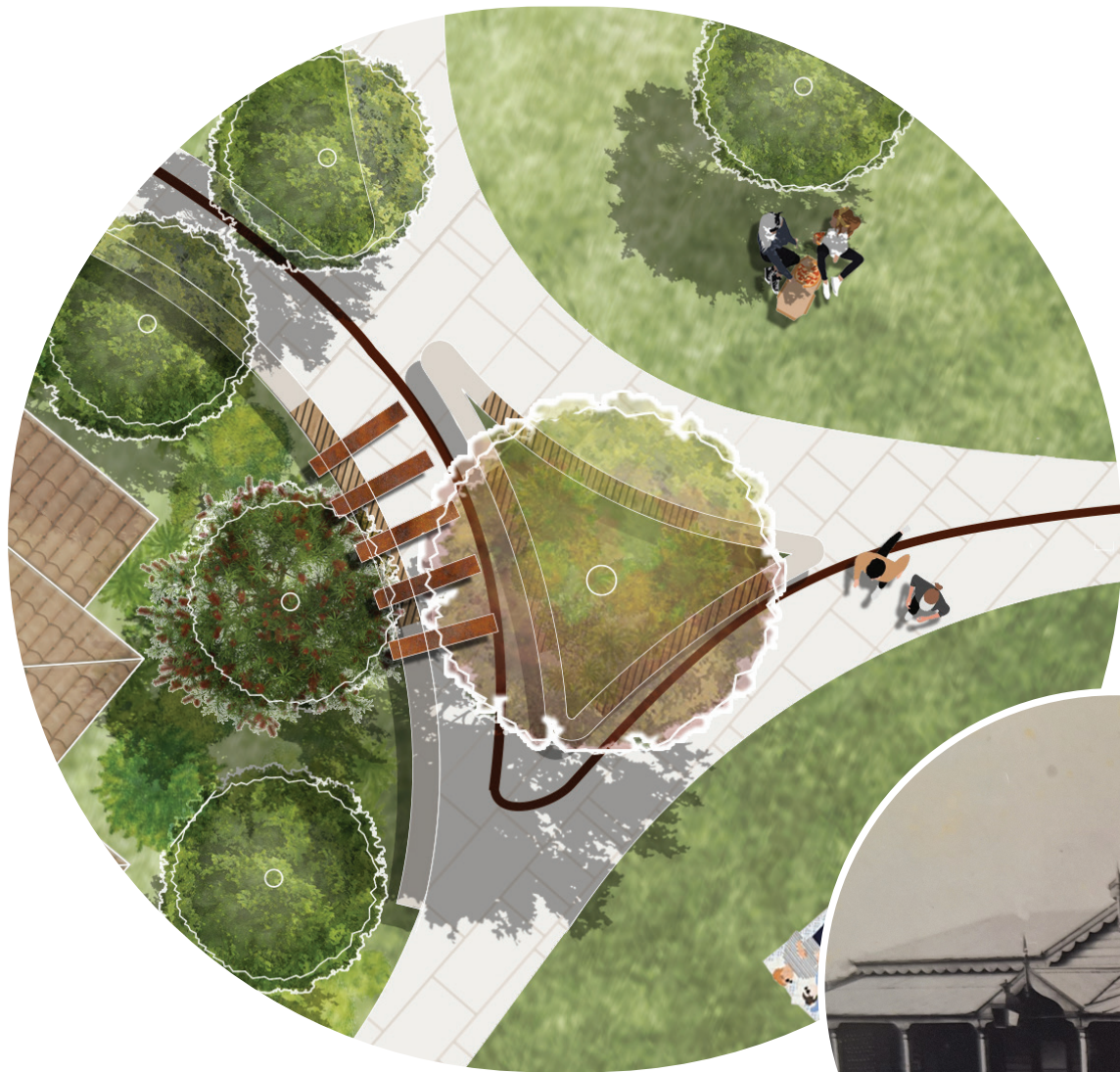
Preserve and showcase historical features such as the clay drain that was recovered from Lennox Street, during civil construction works. The concept proposes imbedding and recreating the clay drain along the walkways within the site. Similar to the examples shown.



The recovered clay bricks

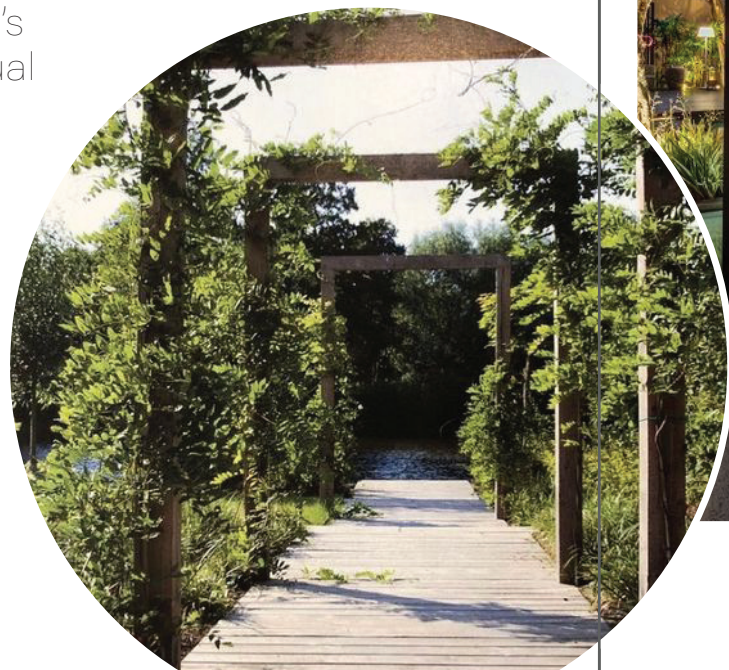


# SHADE



Maryborough  
old Town Hall

Custom designed pergolas are proposed over sections of the walkway to offer users sun and weather protection. This is supplemented with planting of native vines and shade trees, such as Maryborough's iconic tree the scarlett bottlebrush. The pergolas take inspiration from Maryborough's old town hall façade providing visual consistency across the site.

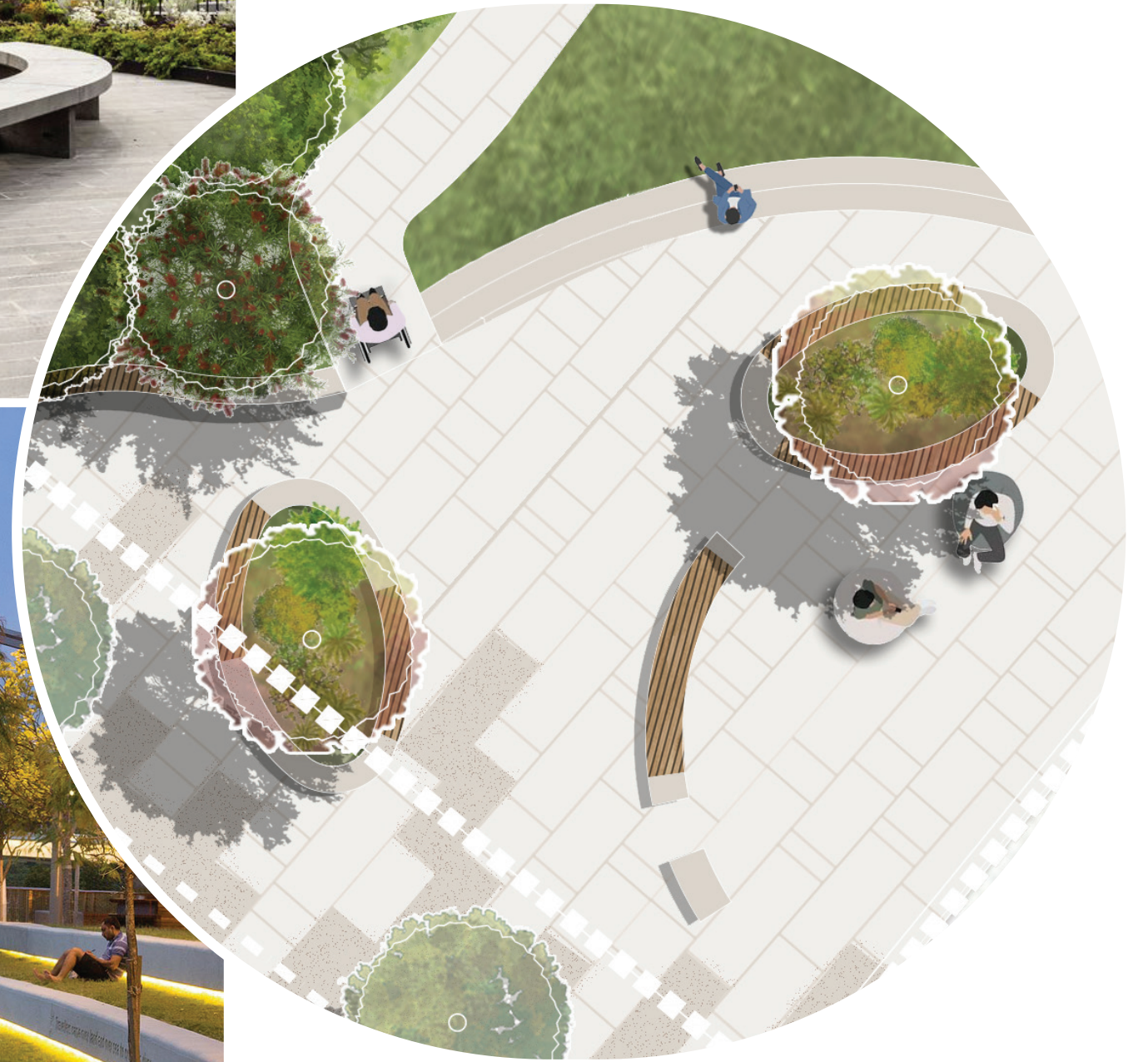




# FURNITURE



Concrete benches with wooden seating meets the complex demands for functionality, ergonomics and modularity, providing an adaptable design that accommodates different styles that fit modern-day public activities. Concrete benches provide a range of seating elements that create a strong sculptural statement while also encouraging communal use.

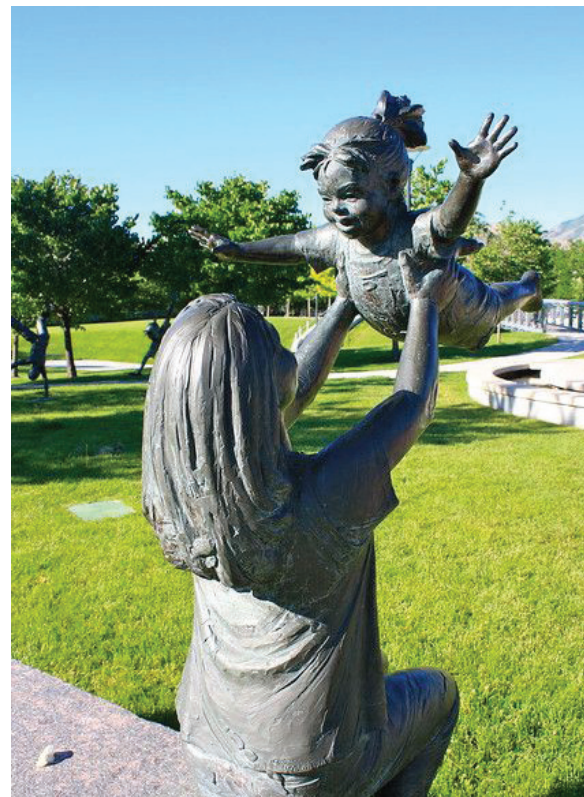


# SCULPTURES & ART



Art and sculptures within the site should reflect the history and importance of the space and surrounding buildings.

Recognition of the original purpose of the baby clinic could be displayed through a statue of a nurse, mother and baby signifying the role the clinic played in the past.



The highlighted linear corridor was once a Reserve for Local Government (Bicycle Parking Purposes). This history could be shown through sculptural bicycle racks. This could also create a possible start/end point for the Mary to Bay Rail Trail.

