



Fraser Coast
REGIONAL COUNCIL

Glenwood Playground Engagement Summary

Engagement & Evaluation Report

September – October 2024





EXECUTIVE SUMMARY

PROJECT OVERVIEW

The Glenwood Community Centre and surrounding land are an important and well-loved feature of the Glenwood community, as a hub of community connection.

Council recently invited the Glenwood community to provide their feedback on a new playground to be built on Pepper Rd near the Glenwood Community Centre. Council has budgeted for the playground to be built in the 2024/ 2025 financial year. Council has resolved to build the playground based on community feedback from the extensive community engagement project undertaken in relation to the Glenwood Community Space Master Plan in 2023.

The new playground will be a great community resource for Glenwood children and their families.

In January 2024 Council endorsed the Glenwood Community Space Master Plan. At this meeting Council resolved to undertake further consultation with families, youth and family based community groups in relation to more detailed concept planning of the playground.

The collaborative approach is to ensure participatory communication and engagement with the local community ensuring the community's needs and views are a part of the final design for the playground.

The engagement findings will assist in the development of the final design including elements and features.

ENGAGEMENT OVERVIEW

Engagement Remit: Help us shape the new Glenwood Playground

The purpose of the engagement for this project was to ensure the Glenwood community had an opportunity to provide feedback on the three draft designs, as well as the potential elements and features, to inform the final design for the Glenwood Playground. *(The draft designs incorporated community feedback from the 2023 engagement process.)*

The project included levels of inform, consult, involve and collaborate IAP2 levels of engagement.

To facilitate the engagement Council undertook an online engagement process (including a survey, interactive designs and quick polls) as well as several stakeholder sessions including – Glenwood Youth Activity Day and targeted sessions with several stakeholder groups (Glenwood State School, Glenwood P&C, Glenwood Mums and Bubs Group, Glenwood Homeschool Group). The engagement took place from 12 September – 10 October 2024.

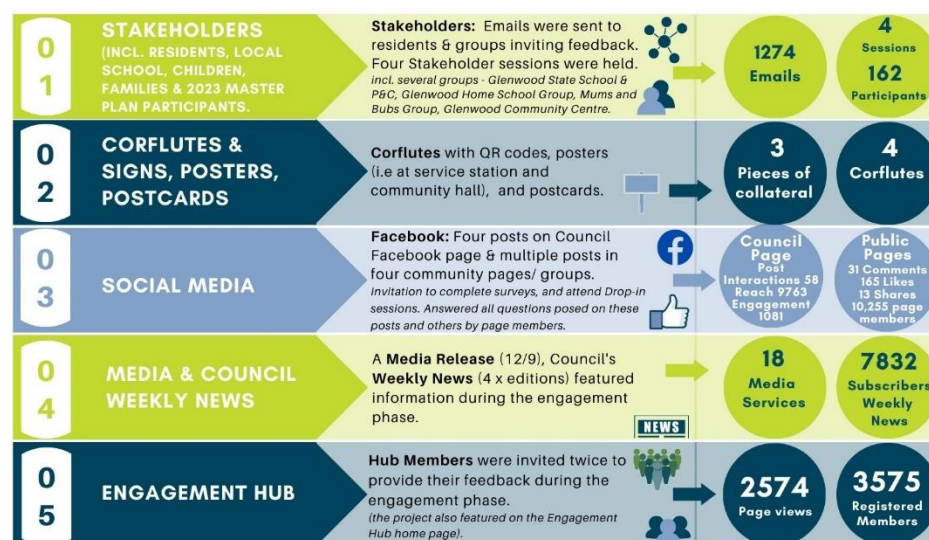
TIMELINE

The engagement timeline is outlined in the following diagram.



COMMUNICATION CHANNELS

Council utilised a diverse range of communication channels to promote the engagement process, inviting stakeholders to have their say and communicate in relation to the project.



THEMES AND CATEGORISATION

Council identified themes based on comments made by stakeholders through the online engagement process and stakeholder sessions. These themes are to illustrate a common or inclusive view of the community in relation to the overall issue as well as analysing the comments in regards to the following engagement topics identified in the remit of the engagement.

- Draft Design Feedback
- Playground Elements and Features Feedback

ENGAGEMENT KEY FINDINGS SUMMARY

KEY FINDINGS

Overall, the proposed designs, elements and features were supported by the Glenwood community. Design 2 with the Multipurpose Half Court was the most supported design overall. The community liked that it catered for all ages – providing a family friendly space. However, young people favoured the Zipline design (Design 3). The Zipline was exciting to the young people and seen by them as 'something different'. On the other hand, adults thought the zipline in Design 3 took up a lot of space and that children would get bored of the zipline quickly. Combining designs was suggested by a number of respondents (3%) – i.e court, senior area and junior area being combined or the court and zipline. Several

additional sports for the multipurpose half court were suggested – including (but not limited too), soccer, pickle ball, netball, tennis and a scooter track.

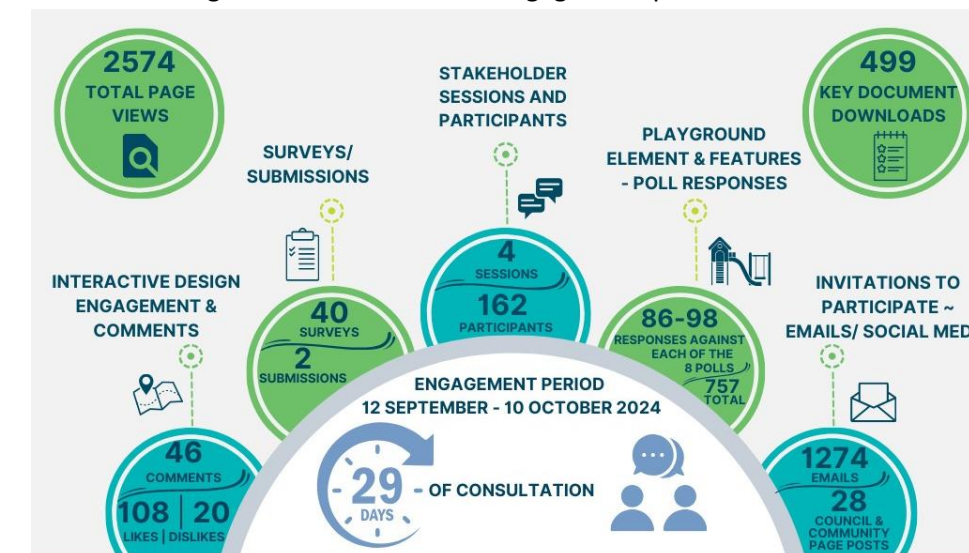
Respondents also raised concerns in relation to fencing (i.e safety), additional shade and seating, drinking fountain/ access to water, and pathways to cater for scooters/ bikes and walking.

Playground elements and features were all generally supported across the designs except for the ping pong table. Respondents suggested the ping pong table space could be better utilised as an additional shade structure with seating or another play element.

A number of respondents raised concerns of the location of the playground to the war memorial, flooding of the space and the impact to large events on the oval (4%) as well as the importance of ensuring accessibility and inclusivity of the designs for people with disabilities (2%).

ENGAGEMENT IN NUMBERS

The below image is an overview of the engagement process.



WHO PARTICIPATED

318 community members participated in the various engagement activities. 111 children participated in the engagement – this does not include anonymous submissions. The following diagram highlights engagement participation.





PLAYGROUND DESIGN FEEDBACK

Feedback across all designs

Overall, the designs were generally supported by the Glenwood Community. Young people favoured Design 3 and Adults favoured Design 2 – and overall the community favours Design 2. Some respondents liked the idea of combining Design 2 and 3 if possible and removing the ping pong table.

Fencing was a concern for the community - due to the close proximity to the road and the creek, and was raised several times by respondents. Having a safe space for children to play was really important to them. A few respondents suggested even if a small number of elements were fenced off for the younger children (i.e Junior Tower, Hut, rocker etc).

The location of the playground was raised by a few respondents – they did not like how close the playground designs are to the war memorial. They were concerned about space for ANZAC Day, Remembrance Day etc as well as access to the oval for larger events (i.e Annual Swap Meet). Flooding was also raised by one respondent.

Accessibility and inclusivity of the designs for people with disabilities was also suggested by some respondents.

Respondents also suggested that the path cater for children to be on their scooters.

Design 1

Design 1 is the least supported design out of the three designs.

The community liked that the design caters for all age groups and provides a variety of elements and features that offer activities from toddlers to 12 year olds. It is the design that offers the most activities for young people (toddler – 12yers) – providing something for everyone.

There were differing views over the two separate areas. Some respondents liked that there was space for “little kids” and “big kids”, safer for the younger children to play and gives more space to the older young people. In contrast other respondents thought that this option maybe difficult to supervise if you had children of differing age groups in both areas. Some respondents suggested that separate areas was not the best use of space.

Design 2

Design 2 is the most supported design overall and was the design favoured by adults.

The community liked that the multipurpose half court catered for older young people – including up to teenagers. Creating a youth hub space for all ages. Respondents liked that it was community/ family friendly and that adults could get involved with children. In addition, it offered sport and recreation opportunities – it wasn’t just a playground. A few respondents also commented that the court could double as a space for kids to ride scooters if the court wasn’t being used. Some respondents also suggested that one combined area was better for the community.

Design 3

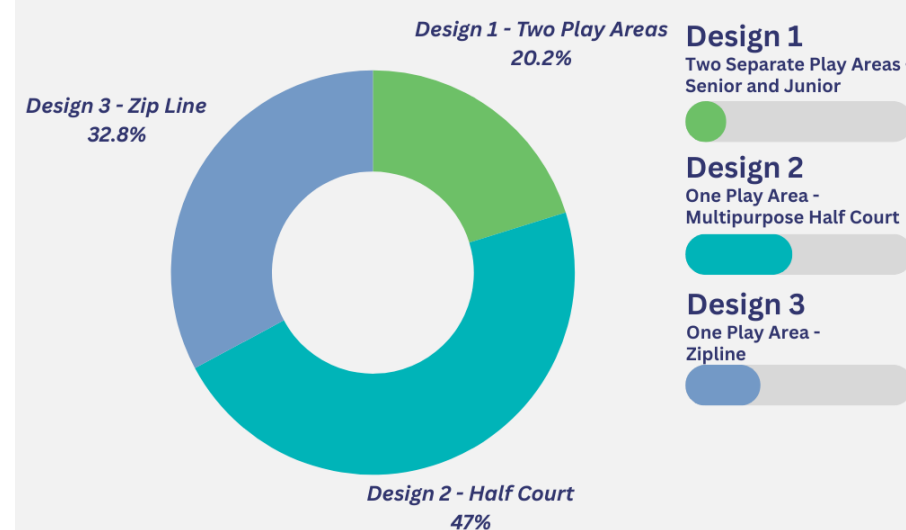
Design 3 was the second most supported design overall and the most supported design by young people. The children were very excited about the zipline during the stakeholder sessions.

Some respondents expressed concern that the Zipline could only engage one child at a time, and children will find it fun initially but get bored with it. Where as, the other designs offer a wider range of activities and opportunities. They also expressed that the Zipline takes up a lot of space and the design overall doesn’t offer as many activities. Respondents also identified that this design does not cater to as wide an age group as Design 2. Some respondents also suggested that one combined area was better for the community.

OVERALL FEEDBACK

OVERALL COMBINED - FAVOURITE DESIGN

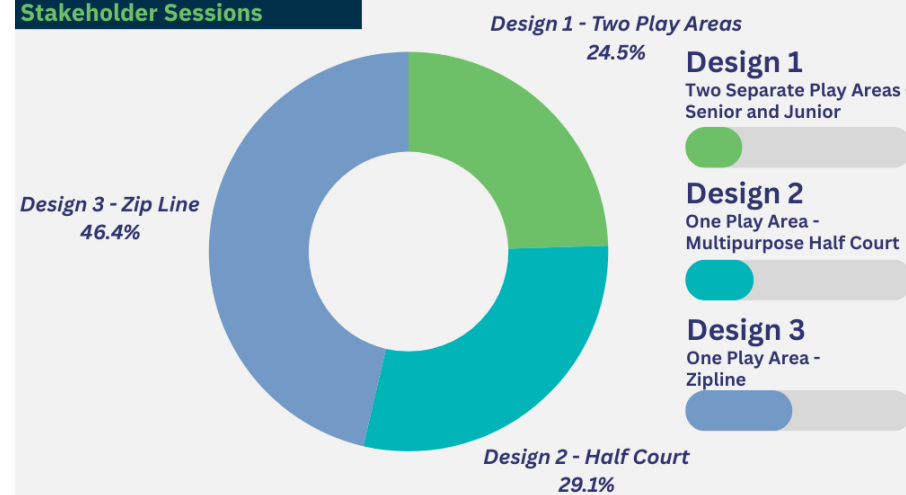
Favourite Design All Engagement Activities



YOUNG PEOPLE (Under 18 Years)

CHILDREN - FAVOURITE DESIGN

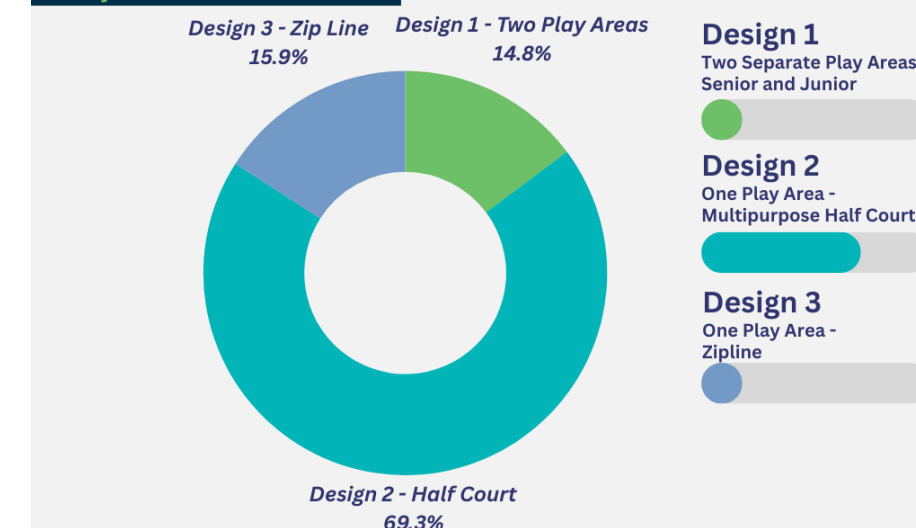
Favourite Design Stakeholder Sessions



OTHER AGE GROUPS

ALL OTHER AGE GROUPS - FAVOURITE DESIGN

Favourite Design Survey & Stakeholder Sessions



PLAYGROUND ELEMENT AND FEATURES FEEDBACK

Playground elements and features were all generally supported across the designs except for the ping pong table. Respondents suggested the ping pong table space could be better utilised as an additional shade structure with seating or another play element.

Junior Play Hut/ House and Tower

Respondents liked that the junior elements catered specifically for young children. They liked that they were age appropriate and offered a specific play space that was safe for young children. Junior Play Hut 2 and Junior Tower 3 were the most liked style of elements.

Small Elements and Sensory Elements

Community members were generally supportive of the small elements and sensory elements. The sand digger, balance steppers, rocker, spinner, music pipes & drum element and play panel 1 were well liked styles of elements.

Large Tower

Respondents were supportive of the large play towers across all the designs and that they catered for all ages. Large Tower 3 was the most liked style of tower.

Swings

Swings were highly supported across all the designs – coming in fourth as a high priority with children and second with Adults. One respondent suggested four swings instead of three to cater for people with disabilities. Another respondent didn’t like the basket swing – their comments were in relation to the safety of them. However, during the stakeholder sessions the children liked that there was a basket swing. Swing 2 was the favourite style of swings.

Outdoor Ping Pong Table

Overall, the outdoor ping pong table was not supported by respondents. Community members thought the space could be better utilised for another



shade/ seating area, BBQ area, combining Design 2 and 3 (i.e Zipline and Half Court), sensory play, or all ability element.

Some respondents questioned how community members would access balls, bats etc to utilise the table.

A few respondents did like the ping pong table and liked that it catered for older young people.

Large Spinner

The idea of a spinner type element was generally supported by the community. When the children were asked at the stakeholder sessions what their favourite element was – large spinners came in fifth.

Zipline

The Zipline was well supported by children at the stakeholder sessions – it was the most liked feature and the highest priority for the young people. In contrast the Zipline was not one of the liked features by the adults at the stakeholder sessions. Lastly, when including the online feedback the zipline did not feature in the top five liked features. Some respondents stated that the zipline would be a favourite of the children and something different. Others thought that it took up too much room and children would get bored of it.

Half Court

The half court was the most liked feature overall. Respondents stated that it was one of the better elements and would be used well by the whole of the community. They also suggested adding in other sports to the half court like soccer goals, tennis, volleyball and pickleball. Respondents also suggested that the half court comply with proper half court dimensions, shade be added and the ability for scooters to be able to be ridden on the court.

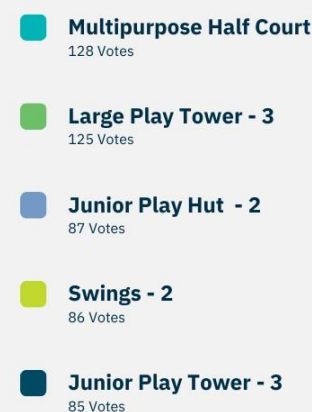
Other

Respondents raised some other ideas in relation to elements and features. Examples include – a climbing wall for older children, pump track elements (like Tiaro), additional pathways for scooters and bikes, and musical/ sensory items.

OVERALL FEEDBACK

OVERALL - LIKED FEATURES

Most Liked Features
Quick Polls and Stakeholder Sessions

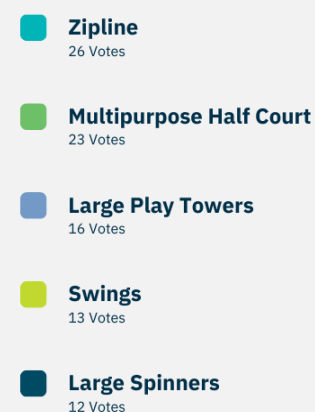


Playground Elements and Features						
Categories	Element 1	Element 2	Element 3	Element 4	Element 5	Favourite
Junior Play Huts	Junior Play Hut 1 22	Junior Play Hut 2 87	Junior Play Hut 3 40			Junior Play Hut 2 87 Votes
Junior Play Towers	Junior Tower 1 10	Junior Tower 2 45	Junior Tower 3 85			Junior Play Tower 3 85 Votes
Small Elements	Spinner 32	Rocker 37	Sand Digger 83	Sand Table 12	Balance Steppers 34	Sand Digger 83 Votes
Sensory Elements	Talking Element 18	Music Pipes and Drums Element 51	Play Panel 1 51	Play Panel 2 18	Play Panel 3 28	Music Pipes & Drums / Play Panel 1 51 Votes
Large Play Towers	Large Tower 1 24	Large Tower 2 33	Large Tower 3 125			Large Tower 3 125 Votes
Swings	Swings 1 57	Swings 2 86	Swings 3 37			Swings 2 86 Votes
Large Spinner	Large Spinner 1 32	Large Spinner 2 68	Large Spinner 3 54			Large Spinner 2 68 Votes
Other Large Play Equipment	Zip Line 73	Half Court 128				Half Court 128 Votes

YOUNG PEOPLE (Under 18 Years)

CHILDREN - HIGHEST PRIORITY FEATURES

No. 1 Favourite Element
Stakeholder Sessions



*Does not include Quick Poll Data - due to the number of anonymous submissions - see overall data

CHILDREN - LIKED FEATURES

Playground Shopping Activity
Stakeholder Sessions

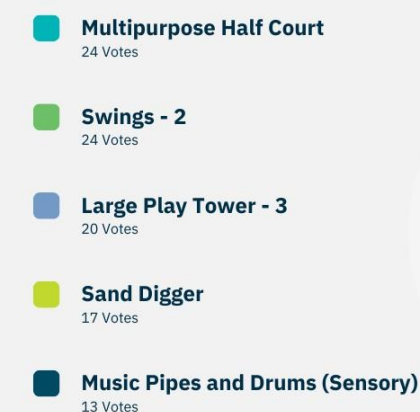


*Does not include Quick Poll Data - due to the number of anonymous submissions - see overall data

OTHER AGE GROUPS

ADULTS - LIKED FEATURES

Playground Shopping Activity
Stakeholder Sessions



*Does not include Quick Poll Data - due to the number of anonymous submissions - see overall data

AMENITIES AND INFRASTRUCTURE

Sandstone retaining and seating blocks

Respondents were generally supportive of the sandstone retaining and seating blocks. Some respondents thought that it was a great alternative seating for parents/ carers and an additional climbing and balancing feature for children. Others suggested shade over the blocks as they will get quite hot particularly in the summer months making them usable all year round. A few respondents were concerned that they weren't a great alternative for seating as they would be uncomfortable particularly for grandparents and people with disabilities.

Plantings and Vegetation

Respondents were generally supportive of plantings and vegetation – plantings be natives to the area. Additionally, one respondent thought edible vegetation or bush tucker plants would be a great feature.



Shade, Shelter and Seating

Respondents were very concerned that there was not enough shade and seating in the designs. They raised that an additional shade structure with seating be added and some suggestions included removing the ping pong table to do this. Respondents suggested that this would allow for community members to have birthday parties, social activities and other outdoor activities at the playground.

Walking Path

Respondents were very supportive of the path as connection between the community centre and car park as well as being wide enough to facilitate children on their scooters. Respondents suggested that additional pathways or extending the pathway for scooter/ bike and walking use would enhance the design. A few respondents were concerned that the path would be driven over during events on the oval.

Other

Respondents raised some other ideas in relation to additional amenities and infrastructure. Examples include – BBQ / Electric BBQ, drinking fountain with water tank coming off shade structures to maintain it, lights on the court and fencing.

COMMENT EXAMPLES

- “I quite enjoy the idea of having a Senior and Junior area since some senior kids may not enjoy playing with the younger kids and want their own space.”
- “I don't think we need a junior and senior play area separated, that seems like more resources than one play area that has both ages considered.”
- “Having the Multipurpose Half Court is probably one of the best things out of all three plans. Can be used by everyone in all ages and can encourage adults to come out with their children or to organise “outings” with some of the community groups in Glenwood.”
- “I think Design 2 has the best and most appropriate features however I do think the playground could benefit from some fencing as a general addition to the design for safely purposes given its close to a busy road and parking area. A think the half size multipurpose area will be well utilised.”
- “Combine zip line from this design into design 2 and leave out ping pong table and this would create an excellent layout or add half court to this design add safe perimeter pathways for riding skating scooter.”
- “I think there are less activities with this design and while the kids will like the zip line its a one-at-a-time activity whereas design 2 can entertain many more with more active games.”
- “The zip line takes up a lot of room and although a fun addition it takes away from other elements and doesn't look substantial enough. Replaced ping pong with something else. Could be a disabled play item.”
- “Please don't put the crappy ping pong table in. Please make sure that plenty of shade and shelter is made important as it's so hot out here.”
- “All good but needs to be further away from the War Memorial.”
- [Sandstone retaining] “Love this element, so great for seating options, climb and balance play, adds to the natural feel of the area. Please consider shading these to encourage the use as seating as they will become quite hot in the sun.”
- “Would like to see the addition of at least a second one [shade shelter] for more than one family and a BBQ so families can hold birthdays at the playground space.”

