

**Queensland Government** Development Assessment Mapping System [Contact](#) | [Help](#)

Matters of Interest Locality Search Search for Land Parcels Reset Map Identify Print Screen Basemaps Draw Measure

**SARA DA Mapping**

Non-SARA DA Mapping

- LOCAL GOVERNMENT AREAS
- ELECTRICITY INFRASTRUCTURE
- NOISE ATTENUATION ZONE FOR OFF-ROAD MOTORCYCLING FACILITY
- KOALA CONSERVATION
- AIRPORT LAND (CAIRNS AND MACKAY ONLY)
- PORTS
  - ☒ All
  - ☒ Port limits
  - ☒ Strategic port land

**SPP Assessment Benchmark Mapping**

**Other State Planning Matters**

PLEASE NOTE: By using this mapping you agree to the full [terms and conditions](#) available on the department's website.

**Poona Rd**

**Cockatoo Cres**

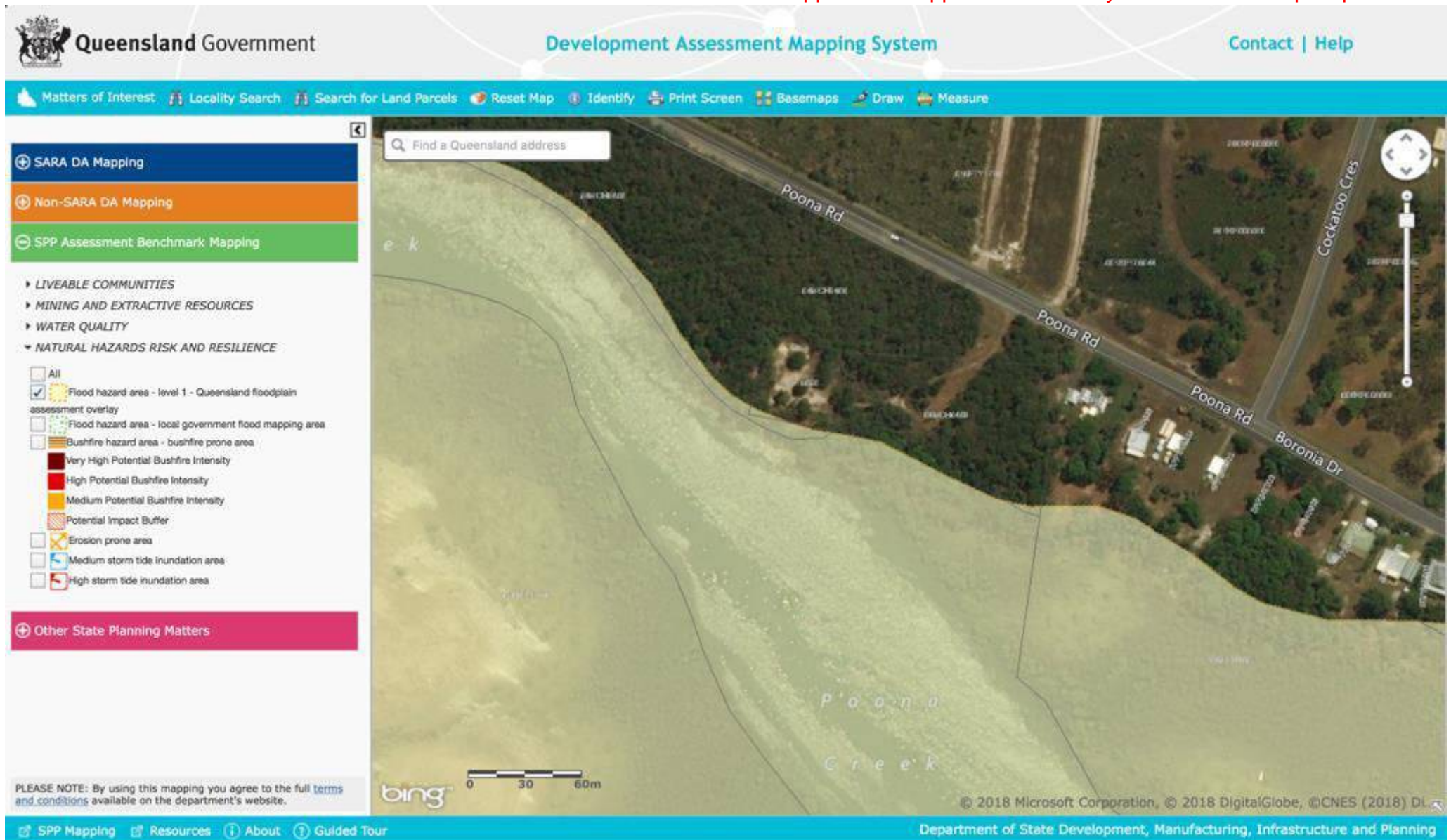
**Boronia Dr**

**Poona Creek**

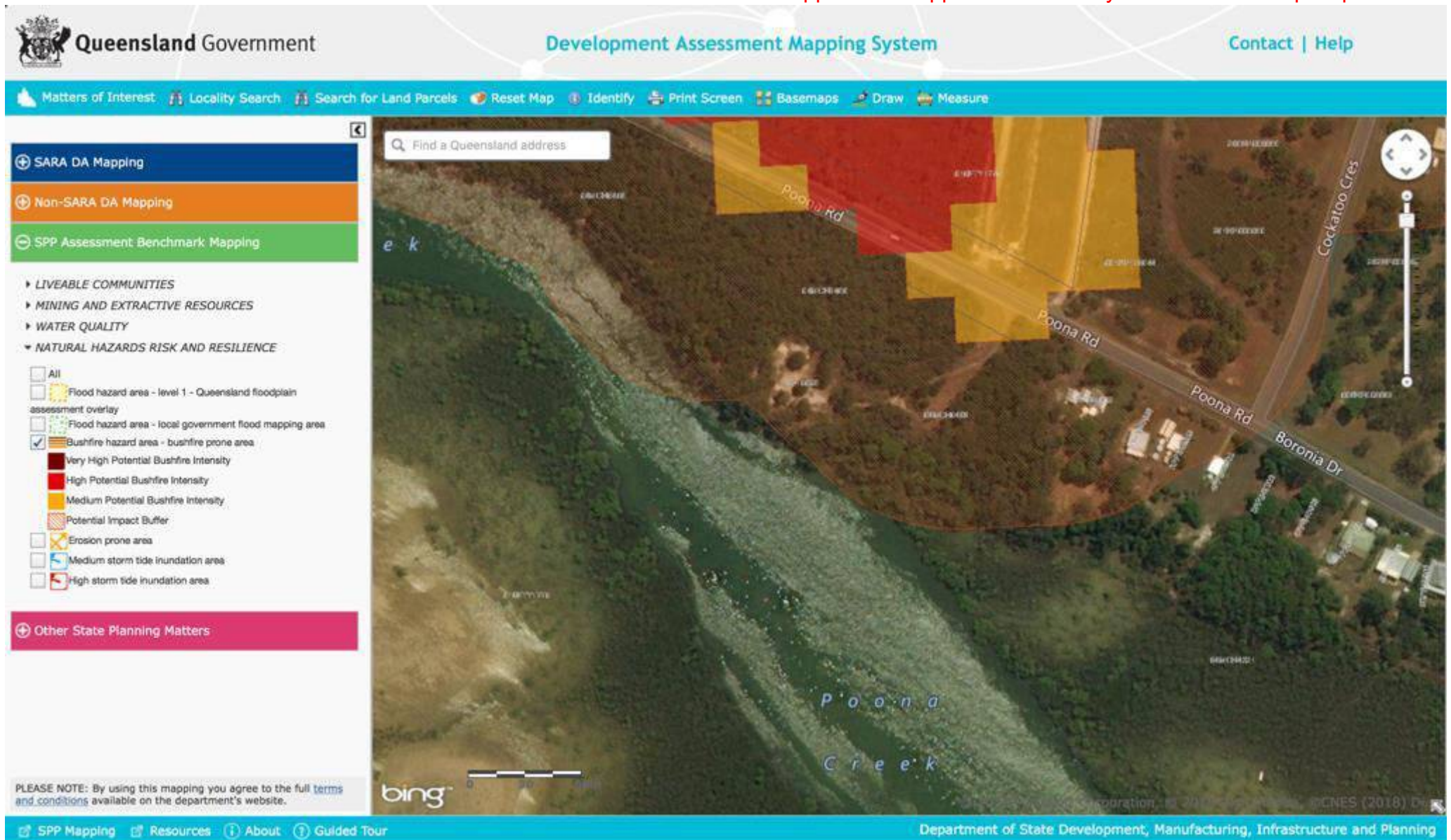
bing

© 2018 Microsoft Corporation. All rights reserved. © CNES (2018) DA

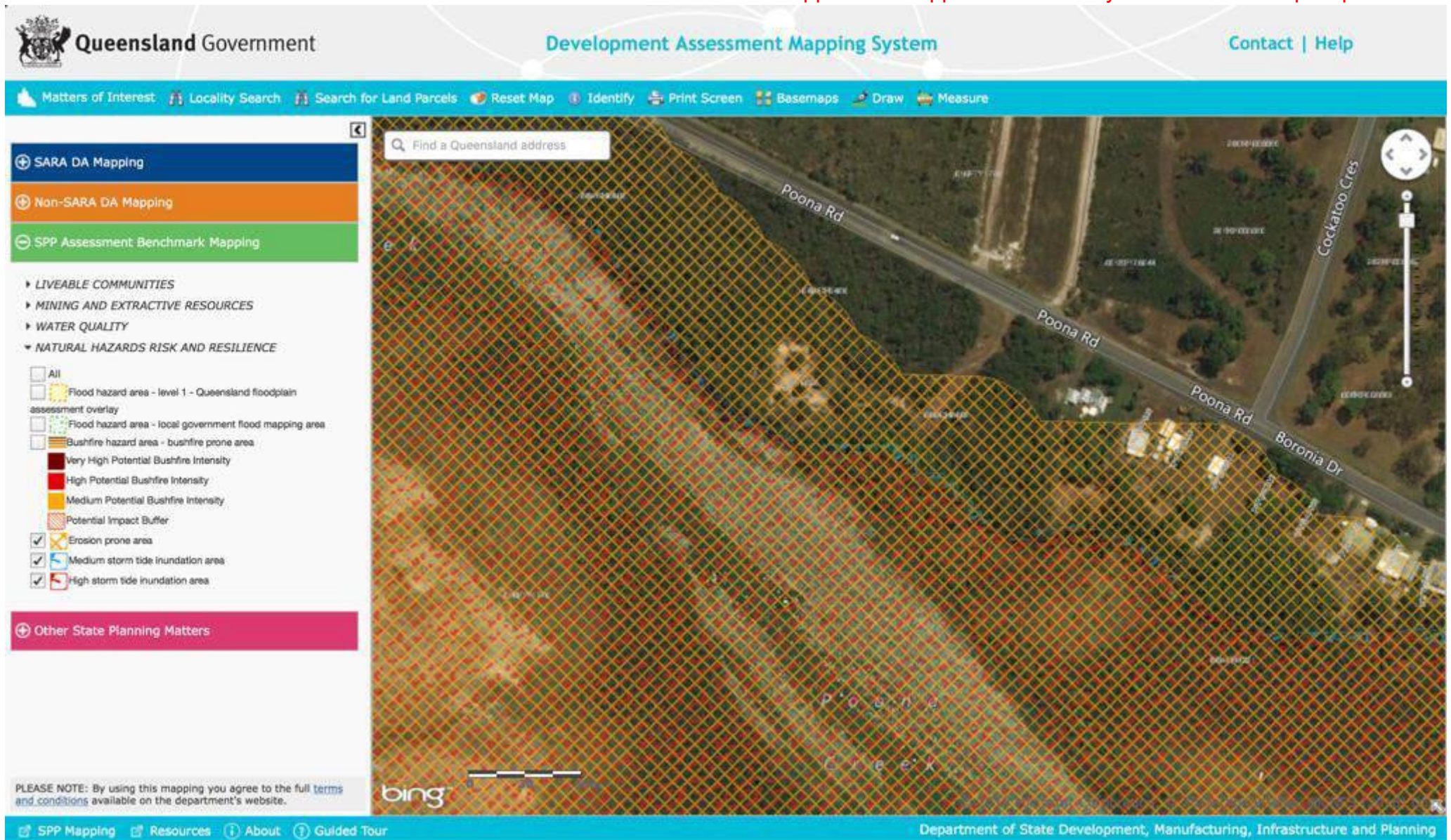
[SPP Mapping](#) [Resources](#) [About](#) [Guided Tour](#) Department of State Development, Manufacturing, Infrastructure and Planning



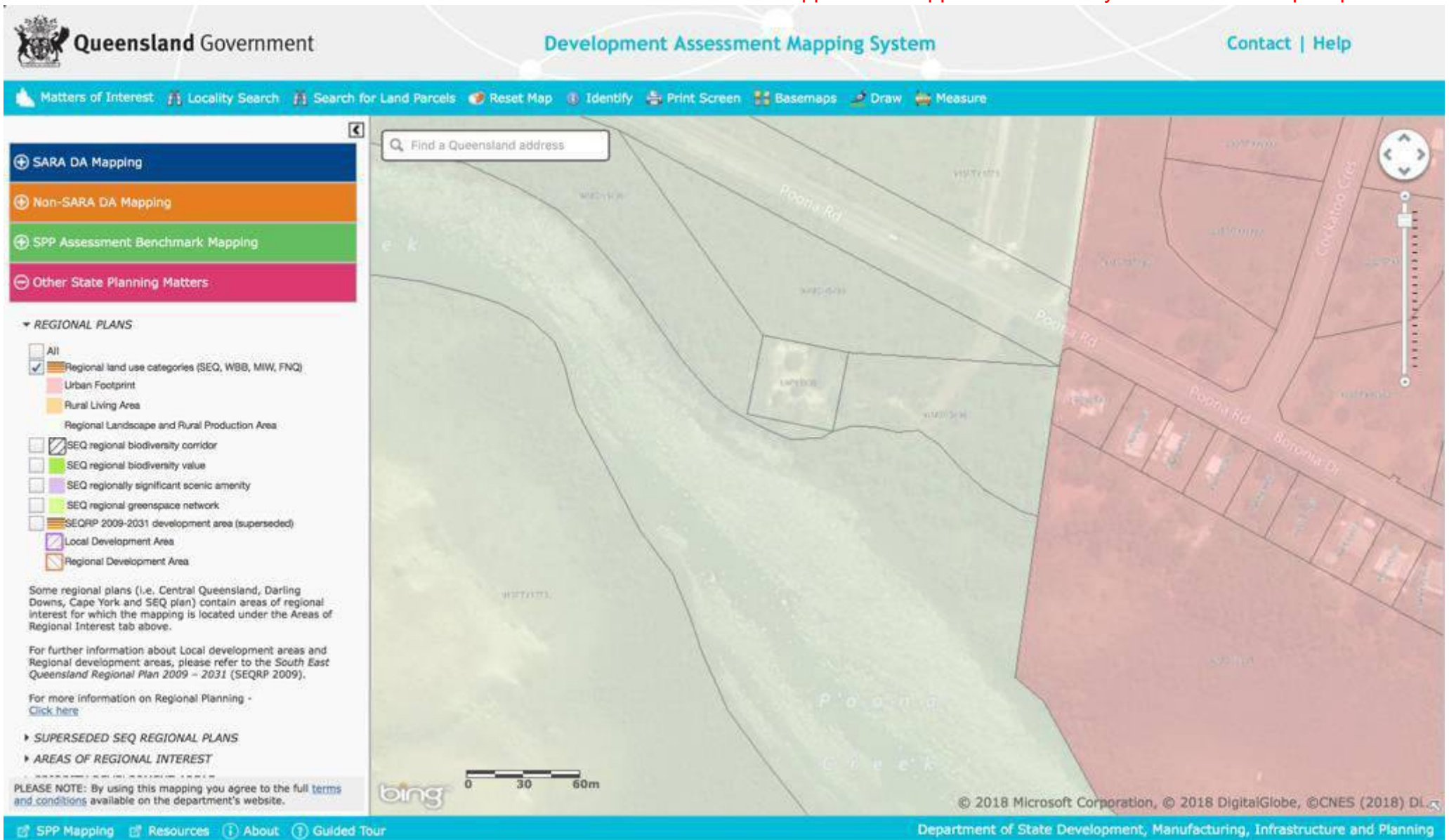
















**Queensland Government** State Planning Policy Interactive Mapping System [Contact](#) | [Help](#)

State Interests | Locality Search | Search for Land Parcels | Reset Map | Identify | Print Current View | Basemaps | Draw | Measure

**Information Purposes**

- Liveable Communities and Housing
- Economic Growth
- Environment and Heritage

**BIODIVERSITY**

- ☐ All
- ☐ MSES - Protected areas (estate)
- ☐ MSES - Protected areas (nature refuge)
- ☐ MSES - Marine park
- ☐ MSES - Declared fish habitat area
- ☐ MSES - Wildlife habitat
- ☐ MSES - Regulated vegetation (category B)
- ☐ MSES - Regulated vegetation (category C)
- ☐ MSES - Regulated vegetation (category R)
- ☐ MSES - Regulated vegetation (essential habitat)
- ☐ MSES - Regulated vegetation (wetland)
- ☐ MSES - Regulated vegetation (intersecting a watercourse)
- ☐ MSES - Strategic environmental areas (designated precinct)
- ☒ MSES - High ecological significance wetlands
- ☐ MSES - High ecological value waters (wetland)
- ☐ MSES - High ecological value waters (watercourse)
- ☒ MSES - Legally secured offset area (offset register)
- ☒ MSES - Legally secured offset area (regulated vegetation offsets)


For the mapping of high risk areas on the flora trigger map please refer to the link provided in the mapping resources page.

PLEASE NOTE: By using this mapping you agree to the full [terms and conditions](#) available on the department's website.

**DA mapping system** | [Resources](#) | [About](#) | [Guided Tour](#)

Department of State Development, Manufacturing, Infrastructure, and Planning


The screenshot shows a web-based mapping application. At the top, there's a header with the Queensland Government logo and the title 'State Planning Policy Interactive Mapping System'. Below this is a navigation bar with links like 'State Interests', 'Locality Search', 'Search for Land Parcels', 'Reset Map', 'Identify', 'Print Current View', 'Basemaps', 'Draw', and 'Measure'. On the left side, there's a sidebar with 'Information Purposes' (Liveable Communities and Housing, Economic Growth, Environment and Heritage) and a 'BIODIVERSITY' section with a list of checkboxes for different MSES categories. The main area is a map showing an aerial view of a landscape with roads (Poona Rd, Cockatoo Rd, Boronia Dr) and a creek (Poona Creek). Green lines and polygons overlay the map, indicating specific land parcels or environmental boundaries. A search bar at the top of the map area says 'Find a Queensland address'. At the bottom, there's a footer with 'DA mapping system', 'Resources', 'About', 'Guided Tour', and the department name 'Department of State Development, Manufacturing, Infrastructure, and Planning'.


**Queensland Government**

[Site map](#) | [Contact us](#) | [Help](#)

**WetlandInfo**

**Department of Environment and Science**



Please take the time to read the [help](#) if you are having difficulty using this application.

[Terms of use](#)

**Report**

**Report Type**

**Report spatial extent**

**Report format**

Looking for a species list? You can request one [here](#).

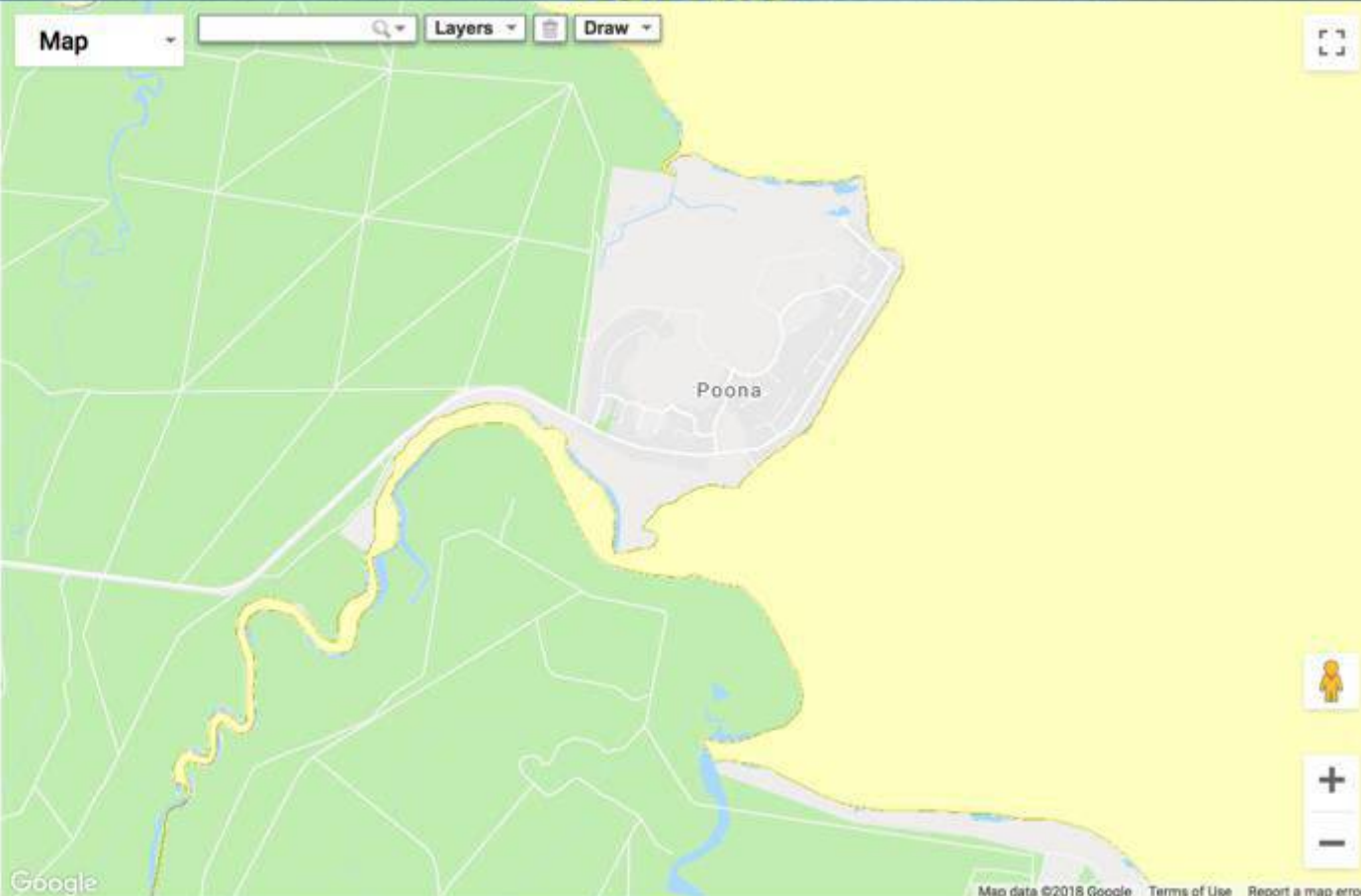
Return Email Address For Your Map

+ Inventory - Project Sites

+ Inventory - Project Surveys

+ Inventory - Species

Map




Map data ©2018 Google
[Terms of Use](#)
[Report a map error](#)

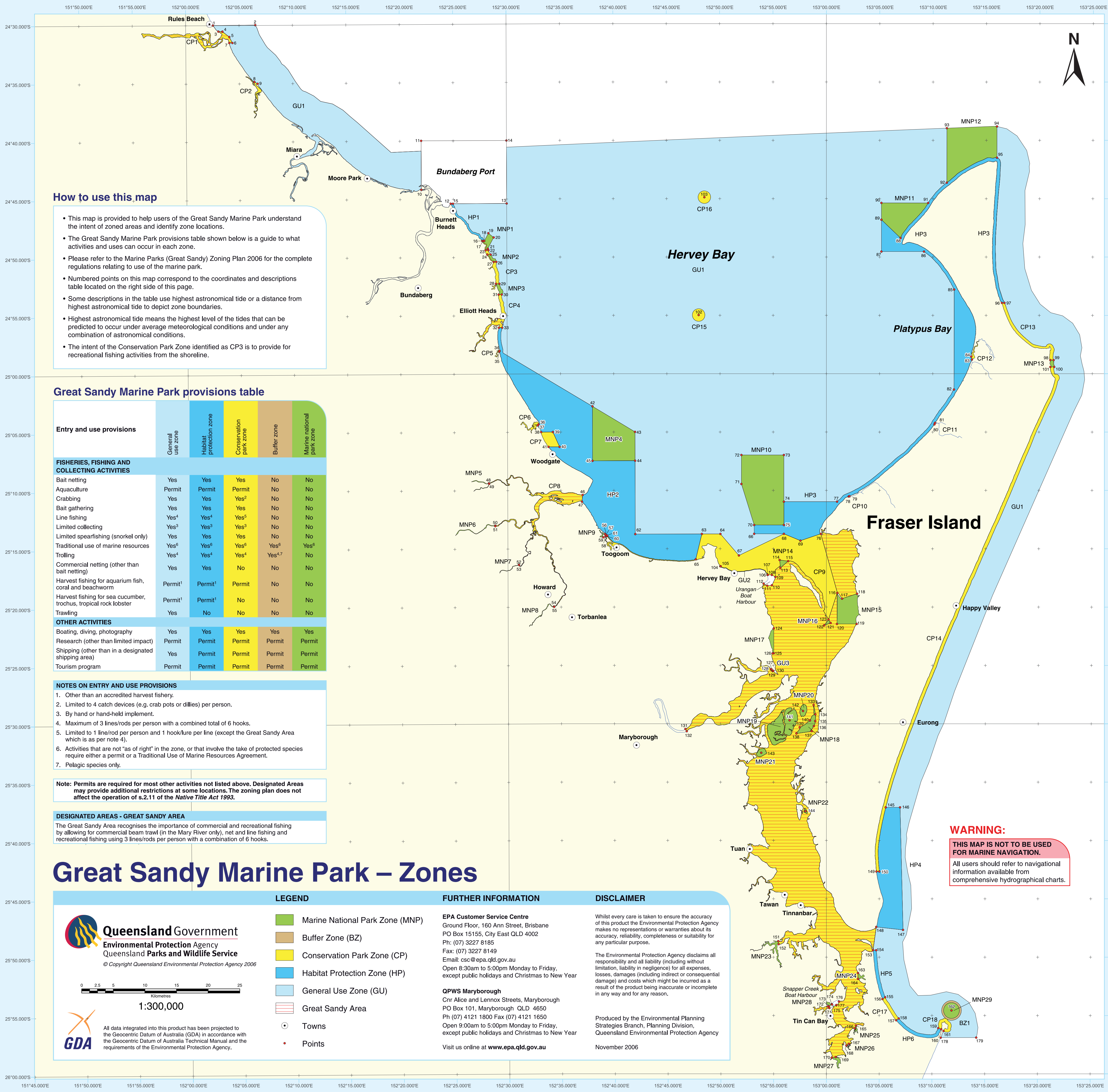
[Copyright](#)
[Disclaimer](#)
[Privacy](#)
[Right to information](#)
[Accessibility](#)
[Jobs in Queensland Government](#)
[Other languages](#)
[Feedback](#)

© The State of Queensland (Department of Environment and Science) 2018

Queensland Government



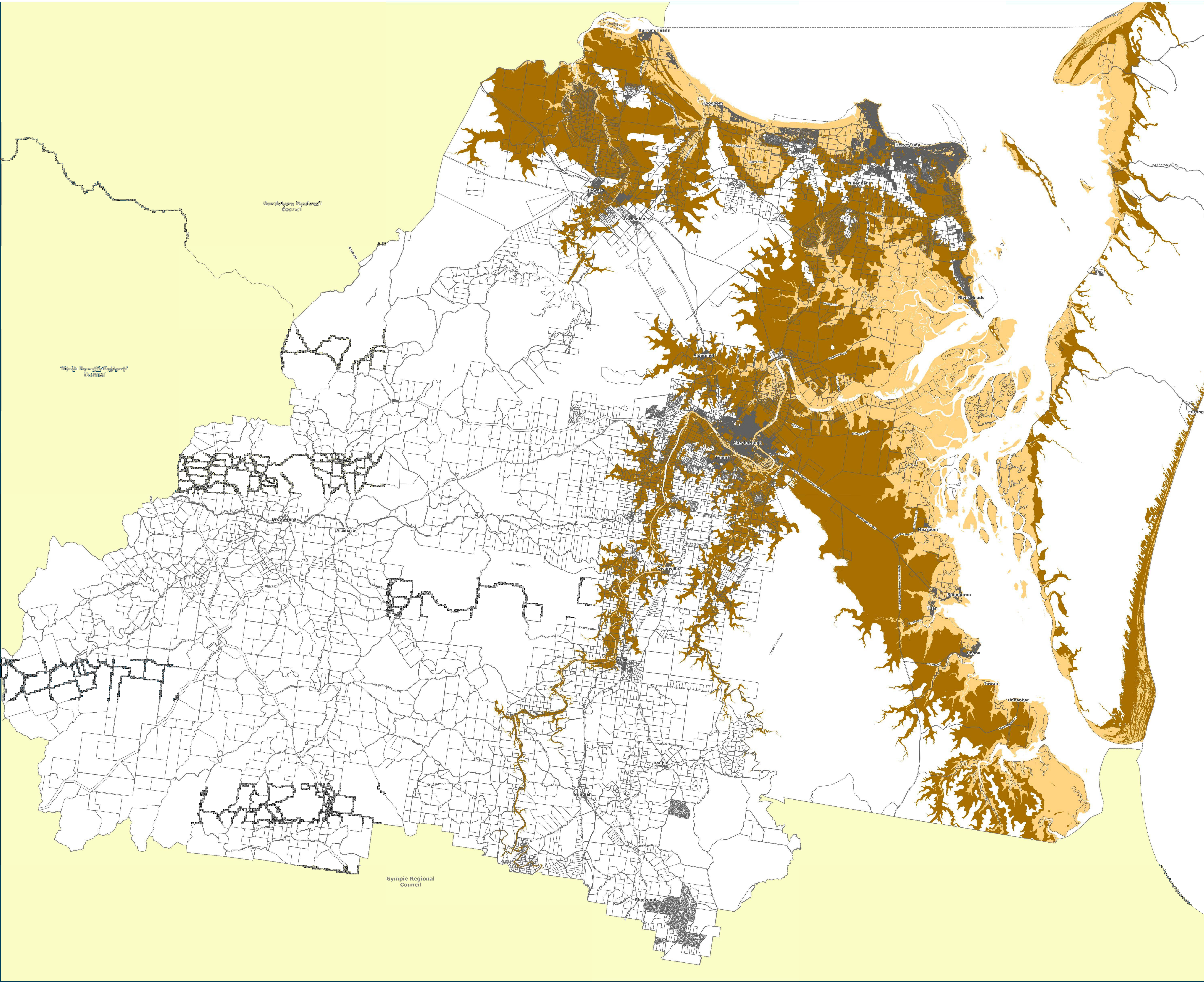




## Great Sandy Marine Park – Zones

ZONE	NO.	DESCRIPTION
GU1	1	Highest astronomical tide along 24°29.900'S
	2	3 nautical miles directly east from highest astronomical tide along 24°29.900'S
	10	Highest astronomical tide along 24°44.189'S
	11	24°40.000'S 152°22.000'E
	12	Highest astronomical tide along 24°45.400'S
	13	24°45.400'S 152°30.000'E
	14	24°40.000'S 152°30.000'E
	178	Highest astronomical tide along 25°56.917'S
	179	3 nautical miles directly east from highest astronomical tide along 25°56.917'S
	3	Highest astronomical tide along 24°30.505'S
CP1	4	500m directly east from highest astronomical tide along 24°30.505'S
	5	500m directly east in front of creek along 24°31.009'S
	6	500m directly east from highest astronomical tide along 24°34.525'S
	7	Highest astronomical tide along 24°31.525'S
	8	Highest astronomical tide along 24°34.874'S
CP2	9	Highest astronomical tide along 24°35.025'S
	12	Highest astronomical tide along 24°45.400'S
	15	300m directly east from highest astronomical tide along 24°45.400'S
HP1	16	Highest astronomical tide along 24°48.605'S
	18	300m directly east from highest astronomical tide along 24°48.605'S
MNP1	19	24°47.939'S 152°28.274'E
	20	24°48.305'S 152°28.771'E
	21	500m directly east from highest astronomical tide along 24°49.271'S
	22	500m directly east from highest astronomical tide along 24°49.395'S
	23	100m directly east from highest astronomical tide along 24°49.395'S
	16	Highest astronomical tide along 24°48.605'S
	17	100m directly east from highest astronomical tide along 24°48.605'S
	22	500m directly east from highest astronomical tide along 24°49.395'S
	24	100m directly east from highest astronomical tide along 24°49.766'S
	25	500m directly east from highest astronomical tide along 24°49.766'S
CP3	26	500m directly east from highest astronomical tide along 24°50.400'S
	27	100m directly east from highest astronomical tide along 24°50.400'S
	28	Highest astronomical tide along 24°52.276'S
	29	500m directly east from highest astronomical tide along 24°52.276'S
	25	500m directly east from highest astronomical tide along 24°59.436'S
	26	500m directly east from highest astronomical tide along 24°50.400'S
	27	100m directly east from highest astronomical tide along 24°50.400'S
	28	Highest astronomical tide along 24°52.276'S
	29	500m directly east from highest astronomical tide along 24°52.276'S
	30	500m directly east from highest astronomical tide along 24°53.203'S
CP4	31	Highest astronomical tide along 24°53.203'S
	32	Highest astronomical tide along 24°56.045'S
	33	500m directly east from highest astronomical tide along 24°56.045'S
	34	Highest astronomical tide along 24°58.036'S
	35	Highest astronomical tide along 24°58.376'S
	36	Highest astronomical tide along 25°04.333'S
	37	Highest astronomical tide along 25°04.426'S
	38	Highest astronomical tide along 25°05.000'S
	39	25°05.000'S 152°34.270'E
	40	25°06.270'S 152°34.900'E
MNP4	41	Highest astronomical tide along 25°06.270'S
	42	25°02.806'S 152°37.998'E
	43	25°04.999'S 152°42.000'E
	44	25°07.476'S 152°42.000'E
	45	25°07.476'S 152°42.000'E
	46	Highest astronomical tide along 152°36.890'E
	47	Highest astronomical tide along 152°36.890'E
	48	Highest astronomical tide along 152°28.224'E
	49	Highest astronomical tide along 152°28.253'E
	50	Highest astronomical tide along 152°28.810'E
CP5	51	Highest astronomical tide along 152°28.810'E
	52	Highest astronomical tide along 152°31.039'E
	53	Highest astronomical tide along 152°31.048'E
	54	Highest astronomical tide along 152°34.319'E
	55	Highest astronomical tide along 152°34.342'E
	56	Highest astronomical tide along 152°31.753'S
	57	Highest astronomical tide along 152°28.224'E
	58	Highest astronomical tide along 152°28.253'E
	59	Highest astronomical tide along 152°28.810'E
	60	Highest astronomical tide along 152°28.810'E
MNP5	61	100m parallel to the coast from highest astronomical tide along 25°13.884'S
	62	25°13.761'S 152°48.274'E
	63	25°13.761'S 152°50.023'E
	64	25°13.761'S 152°50.023'E
	65	100m directly north from highest astronomical tide along 152°49.697'E
	66	25°15.607'S 152°51.758'E
	67	25°14.000'S 152°56.000'E
	68	25°14.348'S 152°57.558'E
	69	25°14.348'S 152°57.558'E
	70	Highest astronomical tide along 25°13.761'S
CP6	71	Highest astronomical tide along 25°17.274'S
	72	Highest astronomical tide along 25°17.274'S
	73	Highest astronomical tide along 25°17.274'S
	74	Highest astronomical tide along 25°17.274'S
	75	Highest astronomical tide along 25°17.274'S
	76	Highest astronomical tide along 25°17.274'S
	77	Highest astronomical tide along 25°17.274'S
	78	Highest astronomical tide along 25°17.274'S
	79	Highest astronomical tide along 25°17.274'S
	80	Highest astronomical tide along 25°17.274'S
MNP6	81	Highest astronomical tide along 25°17.274'S
	82	Highest astronomical tide along 25°17.274'S
	83	Highest astronomical tide along 25°17.274'S
	84	Highest astronomical tide along 25°17.274'S
	85	Highest astronomical tide along 25°17.274'S
	86	Highest astronomical tide along 25°17.274'S
	87	Highest astronomical tide along 25°17.274'S
	88	Highest astronomical tide along 25°17.274'S
	89	Highest astronomical tide along 25°17.274'S
	90	Highest astronomical tide along 25°17.274'S
CP7	91	Highest astronomical tide along 25°17.274'S
	92	Highest astronomical tide along 25°17.274'S
	93	Highest astronomical tide along 25°17.274'S
	94	Highest astronomical tide along 25°17.274'S
	95	Highest astronomical tide along 25°17.274'S
	96	Highest astronomical tide along 25°17.274'S
	97	Highest astronomical tide along 25°17.274'S
	98	Highest astronomical tide along 25°17.274'S
	99	Highest astronomical tide along 25°17.274'S
	100	Highest astronomical tide along 25°17.274'S
MNP7	101	Highest astronomical tide along 25°17.274'S
	102	Highest astronomical tide along 25°17.274'S
	103	Highest astronomical tide along 25°17.274'S
	104	Highest astronomical tide along 25°17.274'S
	105	Highest astronomical tide along 25°17.274'S
	106	Highest astronomical tide along 25°17.274'S
	107	Highest astronomical tide along 25°17.274'S
	108	Highest astronomical tide along 25°17.274'S
	109	Highest astronomical tide along 25°17.274'S
	110	Highest astronomical tide along 25°17.274'S
CP8	111	Highest astronomical tide along 25°17.274'S
	112	Highest astronomical tide along 25°17.274'S
	113	Highest astronomical tide along 25°17.274'S
	114	Highest astronomical tide along 25°17.274'S
	115	Highest astronomical tide along 25°17.274'S
	116	Highest astronomical tide along 25°17.274'S
	117	Highest astronomical tide along 25°17.274'S
	118	Highest astronomical tide along 25°17.274'S
	119	Highest astronomical tide along 25°17.274'S
	120	Highest astronomical tide along 25°17.274'S
MNP8	121	Highest astronomical tide along 25°17.274'S
	122	Highest astronomical tide along 25°17.274'S
	123	Highest astronomical tide along 25°17.274'S
	124	Highest astronomical tide along 25°17.274'S
	125	Highest astronomical tide along 25°17.274'S
	126	Highest astronomical tide along 25°17.274'S
	127	Highest astronomical tide along 25°17.274'S
	128	Highest astronomical tide along 25°17.274'S
	129	Highest astronomical tide along 25°17.274'S
	130	Highest astronomical tide along 25°17.274'S
CP9	131	Highest astronomical tide along 25°17.274'S
	132	Highest astronomical tide along 25°17.274'S
	133	Highest astronomical tide along 25°17.274'S
	134	Highest astronomical tide along 25°17.274'S
	135	Highest astronomical tide along 25°17.274'S
	136	Highest astronomical tide along 25°17.274'S
	137	Highest astronomical tide along 25°17.274'S
	138	Highest astronomical tide along 25°17.274'S
	139	Highest astronomical tide along 25°17.274'S
	140	Highest astronomical tide along 25°17.274'S
MNP9	141	Highest astronomical tide along 25°17.274'S
	142	Highest astronomical tide along 25°17.274'S
	143	Highest astronomical tide along 25°17.274'S
	144	Highest astronomical tide along 25°17.274'S
	145	Highest astronomical tide along 25°17.274'S
	146	Highest astronomical tide along 25°17.274'S
	147	Highest astronomical tide along 25°17.274'S
	148	Highest astronomical tide along 25°17.274'S
	149	Highest astronomical tide along 25°17.274'S
	150	Highest astronomical tide along 25°17.274'S
CP10	151	Highest astronomical tide along 25°17.274'S
	152	Highest astronomical tide along 25°17.274'S
	153	Highest astronomical tide along 25°17.274'S
	154	Highest astronomical tide along 25°17.274'S
	155	Highest astronomical tide along 25°17.274'S
	156	Highest astronomical tide along 25°17.274'S
	157	Highest astronomical tide along 25°17.274'S
	158	Highest astronomical tide along 25°17.274'S
	159	Highest astronomical tide along 25°17.274'S
	160	Highest astronomical tide along 25°17.274'S
MNP10	161	Highest astronomical tide along 25°17.274'S
	162	Highest astronomical tide along 25°17.274'S
	163	Highest astronomical tide along 25°17.274'S
	164	Highest astronomical tide along 25°17.274'S
	165	Highest astronomical tide along 25°17.274'S
	166	Highest astronomical tide along 25°17.274'S
	167	Highest astronomical tide along 25°17.274'S
	168	Highest astronomical tide along 25°17.274'S
	169	Highest astronomical tide along 25°17.274'S
	170	Highest astronomical tide along 25°17.274'S
CP11	171	Highest astronomical tide along 25°17.274'S
	172	Highest astronomical tide along 25°17.274'S
	173	Highest astronomical tide along 25°17.274'S
	174	Highest astronomical tide along 25°17.274'S
	175	Highest astronomical tide along 25°17.274'S
	176	Highest astronomical tide along 25°17.274'S
	177	Highest astronomical tide along 25°17.274'S
	178	Highest astronomical tide along 25°17.274'S
	179	Highest astronomical tide along 25°17.274'S
	180	Highest astronomical tide along 25°17.274'S
MNP11	181	Highest astronomical tide along 25°17.274'S
	182	Highest astronomical tide along 25°17.274'S
	183	Highest astronomical tide along 25°17.274'S
	184	Highest astronomical tide along 25°17.274'S
	185	Highest astronomical tide along 25°17.274'S
	186	Highest astronomical tide along 25°17.274'S
	187	Highest astronomical tide along 25°17.274'S
	188	Highest astronomical tide along 25°17.274'S
	189	Highest astronomical tide along 25°17.274'S
	190	Highest astronomical tide along 25°17.274'S
CP12	191	Highest astronomical tide along 25°17.274'S
	192	Highest astronomical tide along 25°17.274'S
	193	Highest astronomical tide along 25°17.274'S
	194	Highest astronomical tide along 25°17.274'S
	195	Highest astronomical tide along 25°17.274'S
	196	Highest astronomical tide along 25°17.274'S
	197	Highest astronomical tide along 25°17.274'S
	198	Highest astronomical tide along 25°17.274'S
	199	Highest astronomical tide along 25°17.274'S
	200	Highest astronomical tide along 25°17.274'S
MNP12	201	Highest astronomical tide along 25°17.274'S
	202	Highest astronomical tide along 25°17.274'S
	203	Highest astronomical tide along 25°17.274'S
	204	Highest astronomical tide along 25°17.274'S
	205	Highest astronomical tide along 25°17.274'S
	206	Highest astronomical tide along 25°17.274'S
	207	Highest astronomical tide along 25°17.274'S
	208	Highest astronomical tide along 25°17.274'S
	209	Highest astronomical tide along 25°17.274'S
	210	Highest astronomical tide along 25°1





**Legend**

**Acid Sulfate Soils Overlay**

- Acid Sulfate Soils Overlay (OM-001.2)
- Other Planning Scheme Overlay
- Local Government Boundary
- State Boundary
- Water

**Disclaimer**

While every care is taken to ensure the accuracy of this product Fraser Coast Regional Council makes no representations or warranties about the accuracy, reliability, completeness or suitability for any particular purpose and disclaims all responsibility and all liability (including without limitation, liability or negligence) for all expenses, losses, damages (including indirect or consequential damage) and costs you may incur as a result of the product being inaccurate or incomplete in any way or for any reason.

©Crown and Council Copyright Reserved 20/11/2023  
Geocentric Datum of Australia 1994 (GDA94)

2500 0 2500 5000  
Meters

Approx Scale @ A0 1:115,000

**Sheet Map Index**



## Appendix I - Approvals Summary Poona Boat Ramp Report

