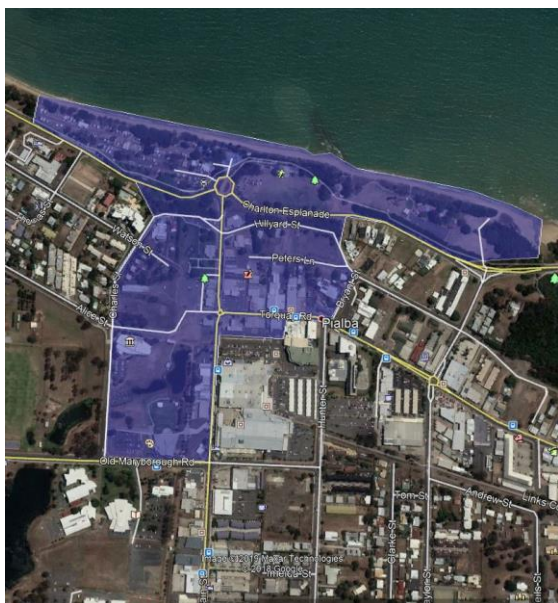


PIALBA COMMERCIAL AND COMMUNITY PRECINCT

PRECINCT MAP



KEY CHARACTER ELEMENTS

Key character elements	Descriptions
Architectural style	Federation, Interwar and Postwar commercial, social and recreational infrastructure / buildings.
Business signage	Generally modest and complementary, although signs that extend above parapet / roof line impact streetscape.
Building materials	Brick veneer, rendered brick or timber cladding.
Building form and layout	Variety of asymmetrical and symmetrical building forms.
Roof style	Hipped, gabled and flat.
Setbacks	Zero front and side setbacks for Main Street commercial buildings. Drive entry and setbacks for other commercial buildings. Church and railway station setback substantial.
Building height	Predominantly one storey, with some two-storey infill.
Orientation to the street	Parallel to the street, with exception of memorial hall.
Car parking / vehicle storage	Combination of on and off-street parking.
Front boundary treatment	Predominantly lacking in facades and typically transparent frontages for shops (especially Main Street). Awnings over footpaths.

Key character elements	Descriptions
Views and Public Space	Strong connection between Main Street shops, Freedom Park and City Park. Views across foreshore out to sea from Hillyard Street and top of Main Street.

CHARACTER STATEMENT

This precinct is the historic commercial and community centre of Hervey Bay. It is characterised by a mix of social infrastructure, predominantly postwar commercial buildings and views across the foreshore and out to sea.

The delineation of Main Street and its relation to the historic railway station, war memorial and memorial hall provides a core, historic character. A relaxed shopping precinct, occupying the original shopping area of Hervey Bay, remains centered on this location, with shops and cafes extending south. Other historic social infrastructure remains extant within the core area, including a church, QCWA and former post office. Service stations along Torquay Road reflecting different periods of Pialba's history remain intact. Minimal residential housing is present due to the historic commercial and social function of the precinct.

City Park, an open space since at least the early 1900s (for much of its history the Methodist-run Condy Park), was an informal but important pathway connecting the education precinct (Pialba State School and Hervey Bay High School) and Main Street.

Boarding houses and hotels (most notably the Pialba Hotel) were located on Hillyard Street, overlooking Seafront Oval and the ocean. These structures were typically one or two-storey buildings that presented a modest impact to views looking south (back) from the foreshore. Although demolished, the historic significance of the viewshed remains.

The connection of Main Street with the Pialba Caravan Park and Seafront Oval remains intact, albeit affected by heavy vehicular traffic. Seafront Oval functioned as Hervey Bay's first sports ground and prime community space since the 1930s. Pialba Caravan Park was the first Council-owned caravan park in Hervey Bay and the 1950s kiosk, which still exists, forms a nexus between the caravan park, Seafront Oval and the Main Street shopping and community complex. The original, narrow Esplanade road alignment runs through the caravan park.

