



# WATERBODY MANAGEMENT STRATEGY: ~ Framework & Waterbody Management Plans (Ululah Lagoons & Lowlands Lagoons)

## COMMUNITY ENGAGEMENT & EVALUATION REPORT

### KEY ENGAGEMENT FINDINGS

- Clear level of concern for **overall maintenance, protection & preservation of waterbodies** across the Fraser Coast.
- Clear message of **maintaining & managing the waterbodies as an important asset** for the community and wildlife.
- The community identified a high level of **importance & value** related to the waterbodies
- While there is a concern for **the impact of exotic fauna & flora species** (i.e ibis & pepper trees) on waterbodies & immediate areas – many see the waterbodies as important areas for local wildlife (particularly in our urban areas).
- The large **majority of respondents live on/ near or visit a waterbody frequently**.
- **Top priorities** relating to actions were: creating wetlands; stabilising bank erosion, revegetating using native species; & managing exotic fish species.
- **Other priorities** incl. (but not limited to): wildlife management, preservation & protection; waterbody preservation, maintenance & management; & collection & control measures of rubbish & debris.
- **Some concerns** regarding proposed actions incl. (but not limited to), being against the reduction in water depths, draining & filling in of waterbodies.
- Overall agreement with issues & actions associated with **Ululah Lagoons & Lowlands Lagoons (Anembo Lakes)** plans.
- **Some concerns** regarding proposed actions incl. (but not limited to), against the removal of islands & against filling in the Anembo Drive Inlet.

### COMMUNICATION CHANNELS

<b>RESIDENTS &amp; OWNERS</b>	Property Owners & Residents within 50m of all 54 council managed waterbodies received a letter & information about the project during the engagement phase inviting feedback.	Letter box drop, Post & Emails	2332	
<b>GROUPS &amp; NETWORKS</b>	Local Groups & Networks received information about the project during the engagement phase inviting their feedback.	Groups & Networks	55 Contacts (incl. groups & individuals)	
<b>SOCIAL MEDIA</b>	Two Facebook posts were posted during the engagement phase. <b>897 engagements</b> with the post. (22/11/19 & 29/11/19)		3968 Reached 401 Engaged 14 Comments 8 Shares	7499 Reached 496 Engaged 2 Comments 10 Shares
<b>MEDIA RELEASE, COUNCIL WEEKLY NEWS &amp; MEDIA ARTICLES</b>	One media release (23/11/19) & Council's weekly newsletter (27/11/19 & 4/12/19) advertised the engagement over three & a half weeks. A Chronicle article featured on 24/11/19.	Media Services	16	6,500 Subscribers - Weekly News
<b>SIGNS &amp; CORFLUTES</b>	Corflutes were established at Ululah Lagoons & Lowlands Lagoons advertising the engagement over the three & a half weeks.	Ululah Lagoons	9	*Anembo Lakes Lowlands Lagoons 8

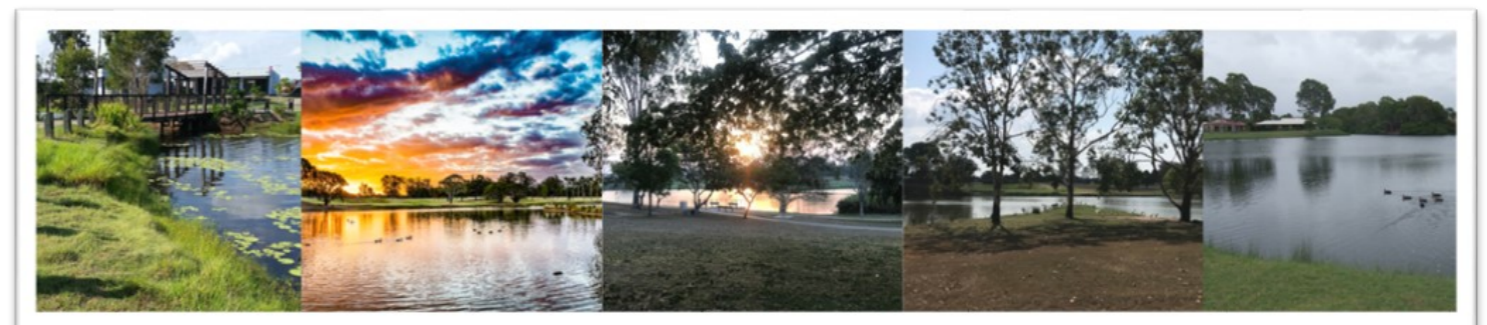
THE PROJECT ALSO FEATURED ON COUNCIL'S ENGAGEMENT HUB PAGE DURING THE ENGAGEMENT

Remit: How do we collaboratively develop a strategic management approach for urban waterbody asset management?

## Engagement in Numbers...



### TIMELINE



## FEEDBACK RESULTS SUMMARY

### WATERBODY ISSUES & PRIORITIES

The survey responses showed a high level of concern in relation to many of the common issues associated with urban waterbodies. The top five areas of concern were:

- Fish kills
- Algal or blue green algae blooms
- Exotic fish species
- Sediment and organic matter build up
- Aquatic weeds

Other comments and themes highlighted concerns relating to (but not limited to); wildlife management, preservation and protection; waterbody preservation and maintenance, rubbish and debris; prohibited use of waterbodies (water); health and safety; water levels and quality; preservation and maintenance of habitat/ natural green spaces; and insect populations.

### WATERBODY MANAGEMENT OPTIONS & PRIORITIES

#### Options & Actions

The survey responses showed a high level of importance of proposed actions in addressing the issues associated with urban waterbodies. The top five actions rated 'somewhat important' to 'important' are outlined below:

- Stabilise bank erosion including re-profiling and/or repairing areas of bank erosion and revegetating using native species
- Establish and maintain emergent water plants along waterbody margins
- Establish and maintain submerged water plants within waterbody
- Manage exotic fish species
- Create wetlands

Other comments and themes highlighted importance for actions associated with (but limited to); wildlife management, preservation and protection; waterbody preservation and maintenance,

### WATERBODY VALUES (INTERACTIONS & EXPERIENCES)

- There was a clear message from respondents of a high level of community importance and value associated with the waterbodies – with many respondents either visiting frequently (i.e 33% daily, 19% 2-3 times a week and 16% weekly); or living on / near a waterbody (33% 'property directly adjoins or faces a waterbody', 27% 'within a short driving distance' and 24% 'within walking distance').
- The top two responses for the purpose of visiting a waterbody were, 'walking and jogging' (43%) and 'wildlife viewing/ bird watching' (47%). Other areas of enjoyment were (but limited to); walking the dog/s; wildlife viewing/ bird watching; playing/ spending time with children and family; living on/near a waterbody; mental health and wellbeing; visual aesthetics, and exercise.

preservation and maintenance of habitat/ natural green spaces; collection and control measures of rubbish and debris; and education. Respondents also raised concerns about proposed actions including being against the reduction in water depths, draining and filling in of water bodies.

#### Priorities

The survey responses highlighted the following three priorities:

- Creating wetlands
- Stabilising bank erosion including re-profiling and/or repairing areas of bank erosion and revegetating using native species
- Managing exotic fish species

Other comments and themes highlighted priorities for (but not limited to); wildlife management, preservation and protection; waterbody preservation, maintenance and management; and collection and control measures of rubbish and debris.

### ULULAH LAGOONS - CONTINUED

Other comments and themes highlighted priorities for (but not limited to); wildlife management, preservation and protection; waterbody preservation, maintenance and management; collection and control measures of rubbish and debris; employment and volunteer programs (i.e implementation); and involvement of local indigenous people (Butchulla).

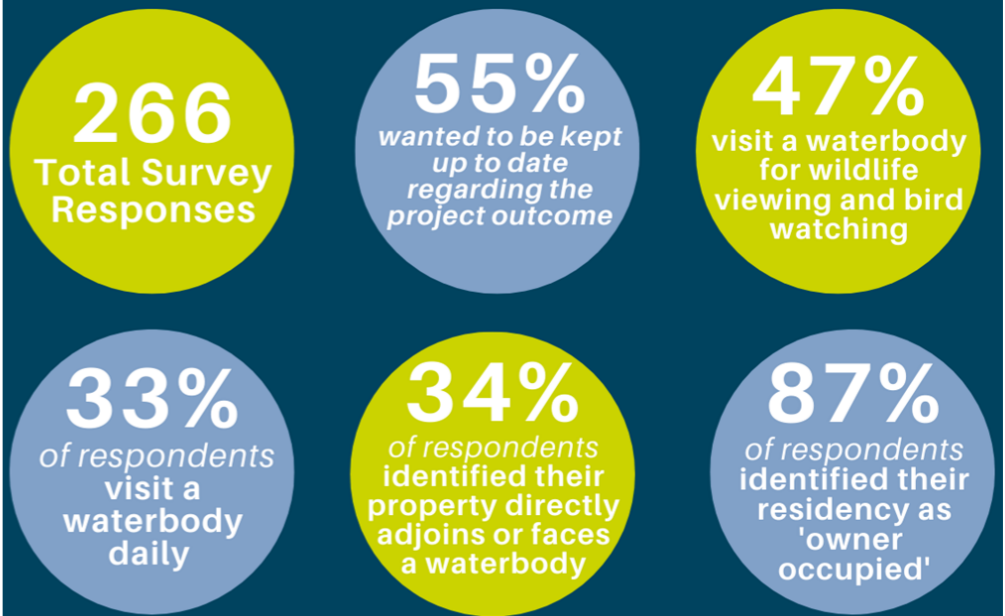
### ULULAH LAGOONS

Issues: The survey responses highlighted that most respondents were in agreement with issues associated with Ululah Lagoons. Only 8 respondents provided additional comments including (but not limited to); fertilisers; maintenance of habitat for wildlife; rubbish and debris; disagreement with the bird issue; and weeds.

Actions: The top five priorities by survey respondents are outlined below:

- Re-vegetate backwater and weedy areas with native species
- Remove declared and targeted weed species
- Re-profile bank edges and revegetate with natives
- Stabilise eroded areas (rock or other)
- Improve drainage structures (overflows, weirs)

## Survey in Numbers...



### LOWLANDS LAGOONS (ANEMBO LAKES)

Issues: The survey responses highlighted that most respondents were in agreement with issues associated with Lowlands Lagoons (Anembo Lakes). 25 respondents provided additional comments including (but not limited to); wildlife management, preservation and protection; waterbody preservation, maintenance and management; preservation and maintenance of habitat/ natural green spaces; and collection and control measures of rubbish and debris.

Actions: The top five priorities by survey respondents are outlined below:

- Re-establish native water plants to manage nutrient content
- Establish vegetation buffers, especially along steep mown edges
- Removal of broad leaf pepper tree and Singapore daisy;
- Staged removal of Mexican waterlily
- Re-profile eroded batters and stabilise edges
- Discourage water bird and turtle feeding

### LOWLANDS LAGOONS (ANEMBO LAKES) - CONTINUED

Other comments and themes highlighted priorities for (but not limited to); waterbody preservation, maintenance and management; preservation and maintenance of habitat/ natural green spaces; wildlife management, preservation and protection.

Respondents also raised concerns about proposed actions including being against the removal of islands and against filling in the Anembo Drive Inlet. There was also comments for and against associated with bird management.